



## Inside



Cedar wreaks havoc. P5



Popular community hub  
still closed 10 months on.  
Page 7



Watch out, thieves are  
about. See Opunake  
Cops. Page 6



Documentary about  
Julian Assange at  
Everybody's  
Theatre. See page 24.

When parents separate.  
Page 25.



Opunake's Lakeside Theatre, the venue for Opunake's inaugural Singer Songwriters night.

## Making waves in Opunake

Opunake will host its first Singer Songwriters night on Friday June 14 at the Lakeside Playhouse in Layard Street Opunake.

We're thrilled to announce the extension of our celebrated Singer Songwriters series to the coastal town of Opunake, says Andre Manella from Singer Songwriters New Plymouth who will host the night.

"After delighting audiences in New Plymouth for 18 years, it's time to bring this musical treasure to a new stage. Join us for an unforgettable evening of storytelling, melody, and community spirit at this debut event."

The Singer Songwriters night is a cherished gathering that spotlights the art of songwriting and the power of live performance, says Andre who organises and hosts

the popular New Plymouth Singer Songwriters event which is held on the last Friday month of the night from February to November

"As we bring this experience to Opunake, we invite local and regional musicians to share their talents and stories through song in a supportive and intimate environment."

This event is about more than just music; it's a celebration of the creativity

that thrives within and around Opunake. It's an opportunity to connect with fellow musicians and music lovers, to share in the joy of live performance, and to make lasting memories, he says.

"We're committed to providing a professional and welcoming environment for both performers and audience members. With top-notch production and a friendly host, we'll make sure this

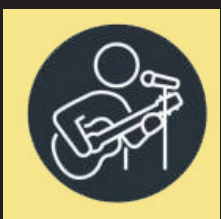
night is one to remember. Gear up for a night where Opunake's music scene shines, showcasing the incredible talent within our community and beyond."

Opunake's inaugural Singer Songwriters night will be at the Opunake Players Lakeside Theatre in Layard Street Opunake on Friday, June 14.

Doors open at 6:30pm with performances starting at 7:30pm. The event is free.

## Opunake's Inaugural Singer Songwriters Night Friday June 14 2024

OPUNAKE LAKESIDE THEATRE - Layard Street, Opunake  
DOORS OPEN: 6.30pm  
7.30pm START




### COME ALONG AND ENJOY:

- A diverse lineup of original music from talented singer-songwriters across the region.
- High-quality production values to ensure each artist sounds their best.
- An engaging and personable host to guide the evening's proceedings.
- A captivated and appreciative audience, ready to be moved by your music.

This event is about more than just music; it's a celebration of the creativity that thrives within and around Opunake. It's an opportunity to connect with fellow musicians and music lovers, to share in the joy of live performance, and to make lasting memories.





# Letters to the Editor

Send your your views to:Letters to the Editor  
23 Napier Street, Opunake.  
email: [editorial@opunakecoastalnews.co.nz](mailto:editorial@opunakecoastalnews.co.nz)  
Pseudonyms are accepted but a contact name is required.

“Let’s create your business growth strategy together”  
Your only local community accounting firm



**HUGHSON & ASSOCIATES**  
Accounting for the future, today  
Hawera - Opunake - Patea - 06 278 4169  
Opunake Office hours:  
Mon, Wed & Thurs: 9am-3pm



## POWER SUPPLY

Rural & Residential

Design, upgrade and repair overhead and underground power supplies

- Powerco Approved Contractor
- Network connections
- Powerline maintenance
- Vegetation control around powerlines
- Fault repair
- Specialists in rural power servicing and installation
- High voltage installation
- Street lighting design and installation
- Underground utility detection

0800 877 746

[powerworx@robertech.co.nz](mailto:powerworx@robertech.co.nz)



# OPUNAKE & COASTAL NEWS

Registered office: 23 Napier Street, PO Box 74, Opunake  
Phone: Office (06) 761-7016, A/h (06) 761-8206

For advertising, email: [ads@opunakecoastalnews.co.nz](mailto:ads@opunakecoastalnews.co.nz)  
For editorial, email: [editorial@opunakecoastalnews.co.nz](mailto:editorial@opunakecoastalnews.co.nz)  
For accounts, email: [accounts@opunakecoastalnews.co.nz](mailto:accounts@opunakecoastalnews.co.nz)

[www.opunakecoastalnews.co.nz](http://www.opunakecoastalnews.co.nz)

Editor: Bernice McKellar  
Journalists/Sales: Rolland McKellar, Bryan Kirk  
Advertising/Production: Vanessa Smith  
Production/IT: Shane Butler  
Delivery: Thursday, fortnightly  
Registered as a newspaper.

Member of the Community Newspapers Association of New Zealand



The Opunake and Coastal News is distributed free to every home and business within the rural area bounded in the north by the New Plymouth city border, extending east to Egmont Village, and around to the edge of Stratford, south to the Hawera city border and inland to Kaponga and through Eltham.

While we welcome free speech, the views expressed in the Letters to the Editor do not necessarily reflect those of the Opunake & Coastal News. Please limit letters to 350 words as we sometimes struggle for space to fit them all in.

### Too much air time

So I see Mr Tom Stephens has penned a couple of articles in this paper which I can’t let go unchallenged. After reading the first article “Fast Tracking Policies are choking us all” it’s very easy to see what type of person he really is as he starts out by name calling and then comes the holier-than-thou, condescending drivel without backup which appears to be largely present in your typical woke, ‘highly intelligent’ leftie. Calling the majority of the people stupid for not listening to him for me was the straw that broke the camel’s back.

For his second article, “Commemorating ANZAC Day” he praises the servicemen that fought for the freedom that he enjoys today and how grateful he is for this. So Tom how can you let these veterans down by supporting a Labour Party that removed your

democratic right to referenda which even you would agree is a corner stone at the heart of a free and democratic society? This is only one of multiple rights that were usurped under your previous Labour Government. Furthermore, this article is either disingenuous or there is a disconnect somewhere in the depths of your brain. I suspect the latter as you have left yourself wide open to be labelled the stupid one here, so it might be time to consider resting your woke New Plymouth pen and give us peaceful coasters a break from your condescending bs.

Quinny  
PS In my defence I apologise if I have reverted to name calling but it was unavoidable in responding to this article and was something I picked up in yesterday’s playground. And Tom if you do respond (Lord help us) please use my preferred pronoun “He’s right”(something I picked up from the Labour movement)

## ADELPHOS

Every new beginning assumes one word—change. And it’s often challenging. There are changes related to parenthood, illness, issues of gender, divorce, new relationships, job offers, growing older or the death of a loved one. Many landmark events in life are beginnings born from other beginnings that have ended.

Change often comes when we don’t want it or expect it. That brings with it a sense of uncertainty. And with those feelings and emotions comes a wanting to stay right where we are—with the old and familiar, and sometimes we

## New Beginnings

do and become stuck.

Have you ever watched a child take their first steps? It was a momentous occasion for our grandson. He had faith in mum and dad holding out their supportive hands. For adults it often takes this kind of beginner’s eyes and ears to try something new: just like a little child. Young children raised in a nurturing, secure and predictable environment have great faith in their parents’ words. Dr. Martin Luther King’s famous words can help kick-start our transition from the old to the new, “Take the first step in

## Rubbish both demonic and communal

I was disgusted when I walked through Pukekura Park. There is a great deal of rubbish dumped over the Taranaki Raceway boundary in the New Plymouth District Council reserve next to the TSB Stadium. Access was made through the Raceway property and dumped over the broken boundary fence, where there is a no dumping sign. There seems to be both demonic and communal

rubbish. The question is who is responsible for cleaning it up? Talk about this sort of dumping is a bad source of breeding pest animals (rats).

Ian McAlpine  
New Plymouth  
Te Kairangahau - The researcher, re your letter The Treaty and its influence on New Zealand politics.  
Your letter is too long. We have a word limit of 350 words.



Rubbish in Pukekura Park.

faith. You don’t have to see the whole staircase, just take the first step.”

Jesus reminds us of the childlike faith needed to help achieve and cope with the changes needed for a new beginning. His disciples must have been shocked when Jesus said that little children have a more genuine and humble faith attitude than His closest adult friends, “...I tell you the truth, unless you change and become little children, you will never enter the kingdom of heaven. Therefore whoever humbles himself like this child is the greatest

in the kingdom of heaven” (Matthew 18:3-4. Also see Matthew 19:13-14, NIV). This kind of childlike—not “childish”—faith can give rise to the first step in our new beginning.

We can also remind ourselves how we successfully navigated change in the past and that we can do it again. Sometimes we can write a list of the pros and cons. This can be helpful because it takes wisdom to not rush into a new beginning when we haven’t made changes, or healed, from previous situations.

After all, change brings grief, losses and gains. We just have to look for the gains. God always desires to co-create a healing and new beginning with and within us. Sometimes it takes the faith and very first step of a child to get started.

Kia kaha,  
Adelphos

# Vehicle Valet Service



COST: \$85.00 per hour incl g.s.t.

Bookings available Wednesday’s & Thursdays.  
Other days on request.  
Car can be picked up and dropped back for small fee.  
Vouchers available.

## PICKERING MOTORS LTD

OPUNAKE



**CONTACT:**

Pickering Motors Office on:

06 761 8363 | 0800 22 11 20

Ask for Tracey or Linda.

## IHAIA MOTORS

for  
A GRADE REPAIRS

• Tyres	• Batteries
• Lubes	• W.O.F
• Panel beating	• Painting
• Farm Bikes	• LPG
• All mechanical repairs	
• Insurance work	
• Radar Detectors	

**AT COMPETITIVE PRICES.**

Tasman St, Opunake  
Ph (06) 761-8502



# Growth for Taranaki in census

Stats NZ has released the first data from the 2023 Census, offering insights into the residential population by region, demographic details such as ethnic groups and age distribution, and the population of Māori descent.

Te Puna Umanga Venture Taranaki, the regional development agency, has welcomed this initial release. The findings are an invaluable resource for the region's enterprises, councils, and industry leaders, providing data to inform decision-making and understand future workforce trends.

"Accurate and up-to-date statistics are important elements in the business planning toolbox," said Te Puna Umanga Venture Taranaki Chief Executive, Kelvin Wright. "This data will give our region's enterprises a better understanding of the size of the regional and national marketplace."

Wright highlighted the importance of the new data, stating, "Importantly, this data will also support our region's case when it comes to accurate analysis around population-based funding models and provide up-to-date information for local planning projects."

The updated population data presents a positive outlook for growth across all three Taranaki districts:

The region now makes up 3% of New Zealand's total population. The resident population in Taranaki has increased by 7.2%, from 117,561 in 2018 to 126,015 in 2023. New Plymouth District population grew by 7.8% to 87,000, Stratford District population grew by 7.1% to 10,149, and South Taranaki District population grew by 5.4% to 29,025.

"Positive growth across all three Taranaki districts suggests that the region remains a desirable destination to live and work. We offer an attractive alternative to main centres, combining the best of city living with the richness and additional benefits of residing regionally," says Wright.

The median age in Taranaki is stable at 40.4 years, compared to the national median age of 38.1 years. The 65 and Over age group has increased by 17.6% in Taranaki since the 2018 Census. The

Under-15 age group has increased by 3.1% in Taranaki, with a notable 12.9% increase in the 10-14 age range. The Working Age (15-64) age population has grown by 5.7% in Taranaki, slightly higher than the national growth rate of 5.5%.

The percentage of people of Māori descent in Taranaki has risen from 22.5% in 2018 to 24.4% in 2023 (an increase of 4,278 individuals, from 26,505 to 30,783). There has been a slight decrease in European from 84.8% to 83.6%. There was a noticeable increase in the Asian peoples from 4.5% to 5.7%, an increase for Pacific peoples from 2.1% to 2.6%, and an increase in Middle Eastern/Latin American/African from 0.6% to 0.8%.

Wright says "The increasing diversity within the region is a strong indicator of a vibrant and inclusive future workforce and leadership. Taranaki must plan strategically to leverage its growing and diverse population, fostering a dynamic workforce with the right mix of skills and expertise. This approach will be critical for addressing future challenges and seizing new opportunities in an ever-evolving economic landscape."

Census data informs important work undertaken by central and local government, iwi, community groups, researchers, and businesses that impact every person, family/whānau, and community in Aotearoa New Zealand.

## How do we convince people to stop sharing misinformation on social media?

: Making social media users declare they believe a news story to be true before sharing it may reduce the amount of misinformation they share, according to Australian researchers. The team tested two types of prompts before study participants chose whether to share a series of social media news posts. The first prompt, called the 'accuracy prompt', asked participants whether they believed a post was true before asking them whether they wished to share it. The second prompt was similar, but participants were told they were only allowed to share posts they believed were true, a strategy the researchers call 'self-certification'. The researchers say participants in the self-certification group were less likely to share misinformation than the accuracy prompt group and a group given no prompts. The accuracy prompt group, however, were just as likely to share misinformation as the group without prompts, with participants choosing to share posts they believed were false. The team says, while it is still possible to lie about whether you believe a post is true, self-certification could be a strategy worth exploring to reduce the spread of misinformation online.



**BRUSH**  
and beyond

**CONTACT CRAIG**  
021 131 7174  
brushandbeyond2024@gmail.com

☒ Interior & Exterior Painting

☒ Waterblasting

☒ Roof Painting

☒ Wallpapering and more

**Have a window or door that needs repair or maintenance?**  
Our experienced team of window & door specialists can help



**Local Family Business servicing Taranaki Area**  
**exceed**  
we fix windows & doors  
Call free anytime 0800 25 25 00  
[www.exceed.co.nz](http://www.exceed.co.nz)



Another stunning photo taken by Staci Holmes from Oaonui of the recent auroras.



**Woodward's**  
FIREWOOD

**Animal Bedding For  
Stand Off Pads  
Calf and Goat Sheds  
Wintering Barns**

— Untreated ground up waste wood —  
— Raw material stockpiled then ground to order —  
— Pick up or delivered to your farm —  
— 9m<sup>3</sup> truck loads —  
— 65m<sup>3</sup> truck loads —

**06 755 2047**  
124 De Havilland Drive, Bell Block • [office@woodwardsfirewood.co.nz](mailto:office@woodwardsfirewood.co.nz)  
[www.woodwardsfirewood.co.nz](http://www.woodwardsfirewood.co.nz)

**CARING FOR YOUR COMMUNITY**



**INGRAM'S**  
PROUD TO BE LOCALLY OWNED & OPERATED  
**PHONE**  
(06) 278 4786  
Bin & Skip Hire





# Simple But Significant

## a simple cremation & burials

Helping Taranaki families with a range of simple, professional funeral services. With affordable caskets, urns & jewellery.

**0800 236 236** 233 Carrington St  
[www.asimplecremation.co.nz](http://www.asimplecremation.co.nz) New Plymouth

Call us on **06 761 7016**

**TO SEE HOW THE**

**OPUNAKE & COASTAL NEWS**

**CAN HELP YOUR ADVERTISING REACH YOUR TARGET AUDIENCE**



FOR ADVERTISING THAT WORKS

**OPUNAKE & COASTAL NEWS**

You can **rely on us** for your **energy needs**

[www.rockgastaranaki.co.nz](http://www.rockgastaranaki.co.nz)



Transform your home - all your hot water, space heating and cooking needs from your trusted local Rockgas supplier.

Count on us - reliable delivery of 45kg LPG cylinders to your home, business, or farm where ever you live.

Locally operated and proud to be part of your community

**rockgas TARANAKI**

Call Rockgas Taranaki  
**0800 LPG 2 YOU or 06 757 9264**



# JSL

Juffermans Surveyors Ltd



**Allen Juffermans**  
Surveyor  
Juffermans Surveyors Ltd

Prospero Place  
**STRATFORD**  
**06 765 4122**

South Taranaki offices are at:

Te W'anake The Foundry,  
High Street, **HAWERA**  
**06 278 4135**

32 Ridgeway Street, **WHANGANUI**  
**06 345 0333**

[www.jsl.nz](http://www.jsl.nz) | [info@jsl.nz](mailto:info@jsl.nz)

# Work proceeding on tourist lodge



The prospects of the Taranaki Crossing drawing tourists to the province got a boost with the recent opening of the suspension bridge over the Manganui Gorge. Among those looking to the influx of visitors to the maunga are Te Korowai o Ngaruahine Trust. Work is proceeding on Te Rere o Kapuni Lodge which is due to open later this year, and is owned by Te Rere o Kapuni Ltd, a subsidiary of Te Korowai.

Te Rere o Kapuni Limited had acquired the former Dawson Falls Lodge in 2016 and later decided to start anew. In September 2021 the lodge ceased operating, with decommissioning and demolition beginning the following month. Work on the new lodge began. Once opened, those undertaking the Taranaki Crossing will have yet one more spot to enjoy on their journey.

# A hot topic for winter meeting

It may be winter but swimming was a hot topic when the Taranaki Coastal Community Board met on May 29.

The Rural Swimming Pools End of Season Report which covered the Manaia, Kaponga, Eltham, Rawhitiroa, Patea and Waverley pools was being presented to the Community Board meeting at the Manaia Bowling Club.

The summer swimming season lasted from December 11 to March 11, and in that time, there were 41 unplanned closures at rural swimming pools run by the South Taranaki District Council, the board were told. Most of these had been due to staff not being available.

There had been problems getting enough people to work during the summer, South Taranaki District

Council operations manager properties and facilities Phil Waite told the board. At least 24 lifeguards had been needed this summer and the Council had only managed to get 19. From mid-January to the end of the season, students were going back to school or university meaning positions weren't being filled so pools had to be closed earlier.

Another problem had been people swimming outside normal hours when a lifeguard wasn't present.

"We're probably lucky there have been no major incidents," he said. "It's fortunate that when you have more than one person swimming out of hours that they are looking out for each other."

Board chair Andy Whitehead asked if it could be possible for groups to rent the pools outside normal opening hours and provide their own support. He said groups like St John or the fire brigade could be invited to provide lifeguards and this could be a fundraiser for them. Manaia resident Bruce Salisbury who was at the open forum had said something similar to this

was being done in Te Puke.

Phil Waite said the council provided courses where people could qualify as lifeguards.

Also up for discussion was a report on a request for a disability carpark and parking lines at the Opunake Swimming Pool. The Council had received the request from the pool's operator who said a regular user of the pool was finding access to the pool more of an issue, while the parking lines would encourage a better use of parking space on Longfellow Road.

Phil Waite said the Council are currently reviewing parking restrictions around the district and putting in parking lines would mean that people could park more considerably.

Board member Monica Willson said that in busy times parking can extend to the right and to the left of the baths, towards the high school and to the verges on the opposite side of the road, so having parking lines would be useful.

During the open forum part of the meeting Bruce Salisbury asked why community board meetings

are held in the afternoon, instead of at 7pm, as was the case with a recent Long Term Plan meeting held at the Robert Gibson Memorial Hall.

"Would you consider going back to 7pm for ratepayers and employees who can't afford to take half a day off work?" he asked.

Mayor Phil Nixon said the Long Term Plan meeting is different from the Community Board meetings which are rotated around the various centres in the Taranaki Coastal Community Ward. He said in his time on the District Council the Council had gone from holding 7.30pm to 4pm meetings, which he believed were better attended than the later meetings had been. He said this time could also be better for some shift workers.

"It's hard to please everyone."

Andy Whitehead said some people prefer the meetings being held during school hours as it meant they didn't have to worry about looking after children.

## FORKLIFTS | CONSTRUCTION EQUIPMENT



- RENTAL
- SERVICE
- PARTS
- NEW & USED SALES



### AGENTS FOR NILFISK FLOORCARE PRODUCTS

## AB EQUIPMENT

31 Hurlstone Drive, New Plymouth  
Mike Robinson - Sales Specialist  
**Ph (06) 757 5197 or 0800 30 30 90**  
[www.abequipment.co.nz](http://www.abequipment.co.nz)



# “It was like a murder scene”

The winds which took out a cedar trunk and yanked out the power cable into an Eltham house left nearby trees unscathed.

It was May 29 and when Lindsay Maindonald came home later that day, the main trunk of the Blue Atlanta cedar had come adrift 9-12 metres above the ground and was spreadeagled across the ground with branches impaling holes in the lawn up to 60cm deep. The fallen tree trunk measuring about eight metres in length blocked the pathway through the lychgate which Lindsay had modelled on the one at the Lepperton Church. Although the lychgate itself was unscathed, the hedge which Lindsay had also created was flattened and a twin coach lamp light was smashed.

On its way down the trunk had also ripped out the cable leading into Lindsay’s 80 year-old house, throwing it nine metres away from the house.

“Can you imagine ripping 230 volts out of the house?” says Lindsay.

As the cable was yanked out, the barge board holding the bolt that anchored the cable snapped, propelling the anchor piece towards the road.

“It fired it in the direction of those steps,” said Lindsay pointing to the lychgate. “I’m very thankful nobody was coming in the gate.”

The trees had been a popular feature when Lindsay had his garden open in the early years of the Taranaki Fringe Garden Festival. While the cedar had taken a hit, other trees including a large yew tree a few metres away escaped unscathed.

“It must have been a sou-westerly coming through,” says Lindsay.

He says a decision to go straight to Hawera rather than go home to change could have saved his life.

Lindsay is a member



Lindsay Maindonald surveys the damage after a freak wind took down a large hunk of a cedar tree in his garden. *Supplied.*

of the Eltham-Kaponga Community Board which had been meeting at Taumata Park in Eltham. The meeting had finished, and Lindsay remembers looking at his watch and noting the time was 11.50am. He was planning to drive to Hawera. Instead of going home to change first, he decided to get on his way. He remembers heavy winds buffeting his car on his way through Normanby.

It was starting to get dark when he got home sometime between 4.30-4.45pm to find the scene of destruction awaiting him.

“It was like a murder scene,” he says.

He asked a neighbour when it happened. She said it was “about lunchtime,” a time when he could have been coming home from the community board meeting.

“I was going to come home,” recalls Lindsay. “I think God must have been protecting me. I just said thank you God because it could have killed me.”

He rang 111 who contacted the Fire Brigade and the Power Board. The Eltham Fire Brigade arrived and fenced off the area around

where the power cable had fallen.

Neighbours rallied round, having Lindsay and his family round for dinner and supplying extension cords so that he could continue powering essential appliances from their place.

Lindsay has been involved in a lot of mountain rescue work over the years, so he says it had been a humbling experience being at the receiving end of the kindness of others.

Two electricians checked out the house to make sure the appliances were in working order and linesmen from Power Worx reconnected the power. One of them who had previously worked for the Forest Service even cut up the wood.

“We’ve got a bit more firewood for winter. Not that we needed much,” says Lindsay.

Lindsay has been living at his current address since 1997 and says he has never experienced anything like this before.

“I heard there was a wind coming through, but we’ve had big winds through here before.”

Ironically a couple of years

ago he and a friend had trimmed back the branches on the cedar because he was worried about them interfering with the power cable. He didn’t think the problem would have come from the trunk.

Meanwhile he has plans of his own for the tree which caused him so much trouble.

“To cut a very long story short, the rest of that tree is coming down.”



Haberdashery, quilting materials and supplies. Wool, patterns and needles. Embroidery and cotton.

Open:  
10am-4pm Mon-Friday  
10am-12pm Saturday

Phone: 06 765 4181  
202 Broadway, Stratford  
www.stratfordknitandsew.com

POWERLINE FAULTS AND SERVICING

From a fuse or broken insulator replaced to a complete powerline rebuild

Call: TOP OF THE LINE ELECTRICITY SERVICES

Greg Lewis: 027 453 0326

Powerline Servicing Specialists  
Free line inspections  
Free advice | Free quotes

LAWYERS

OPUNAKE LAWYERS

Thomson O’Neil & Co.

Our Opunake Office is attended by:  
Robert England on Wednesdays & Fridays  
for buying and selling houses, farms & businesses;  
Trusts, Wills and Estates.

FOR ALL YOUR LEGAL REQUIREMENTS  
30 TASMAN ST, OPUNAKE  
PH: 761 8823

Meet the nurses turning Taranaki frowns upside down.

See the friendly team of Cosmetic Medicine Registered Nurses at New Plymouth’s Face Therapy. Plus, this winter, get that glow back with three Photo Rejuvenation treatments for the price of two.

95 Vivian St, New Plymouth • (06) 757 3411 • facetherapy.co.nz



OPUNAKE COPS

Over the course of Monday night and early Tuesday morning we've had a trend of overnight thefts of vehicles and burglaries. If you have any information to help assist police we urge you to make contact with us. Any information can help from clothing description to seeing suspicious activity over this period of time. Crime can not exist in a community that cares. Crime has three distinct components.

1. A motivated offender (someone who wants or has the propensity to commit crime).
2. A suitable target (i.e. your place because it

is unlocked and has sought-after items inside).

3. Lack of a guardian (there's no one around). What can you do?
1. Taking notice of who is out and about and talking to them (particularly if they aren't locals).
2. Locking your house and removing keys.
3. Closing access gates (particular to your driveway/house).
4. Keeping an eye on each other property.
5. If possible alarm your cars and/or keep them in a garage.
6. Engrave your tools with your name and keep serial number (police have many property items recovered but are unable to return them due to there being no way of identifying the owners or owners being unsure of serial numbers). Crimestoppers anonymously on 0800 555 111 or if



CONSTABLE CHLOE ASHTON

happening now 111. Elder Abuse Day June 15th Age Concern New Zealand raises awareness of elder abuse during our Elder Abuse Awareness Week (15-22 June) kicking off with World Elder Abuse Awareness Day on 15 June every year. We bring attention to the exploitation of older people by running a public awareness campaign and events to talk about how

harmful elder abuse is, and how older people are hurt most often by those they know and trust. Unfortunately, elder abuse is prevalent in New Zealand but often not reported. But we can all play our part in speaking up, so older Kiwis can be free from the fear, mental anguish, emotional pain, and distress the elder abuse causes. The impact of elder abuse is profound for older people, but also avoidable if they get help and intervention services early. This year we want people to get the message to "Spot the Signs" Age Concern New Zealand calls upon all of us to speak out against Elder Abuse. "If you have a gut feeling something is not right or just an inkling someone is being abused, we want you to talk to us". The signs you might spot include:

- Injuries such as bruises, cuts, or broken bones.
  - Malnourishment or weight loss.
  - Poor hygiene.
  - Symptoms of anxiety, depression, or confusion.
  - Unexplained transactions or loss of money.
  - Withdrawal from family members or friends.
- If you suspect and an older person is not being treated well or want to report abuse, please call either the elder abuse helpline 0800 EA IS NOT OK or freephone Age Concern 0800 65 2 105 for free and confidential support. Take care out there.

Chloe Ashton  
CAJR52  
Opunake



**SCHURR IRELAND**  
CHARTERED ACCOUNTANTS

---

**NEW PLYMOUTH**      **ELTHAM**  
p. 06 759 0105      p. 06 764 8305

---

[www.schurreireland.co.nz](http://www.schurreireland.co.nz)



**ELTHAM**  
BUILDING SUPPLIES

*Cabinet Making, Glass Supplies & Custom Joinery Solutions*

**Donald & Ian Murray**

☎ 06 764 8616      📱 027 242 8379  
📱 027 348 9445

136 High Street, Eltham  
[eltham.bs@gmail.com](mailto:eltham.bs@gmail.com)  
[www.elthambuildingsupplies.co.nz](http://www.elthambuildingsupplies.co.nz)



**CERTIFIED**

**Plumbing, Gasfitting and Drain Laying**

*Plus! Roofing, Wood Fires and other Heating Solutions*

**06 761 8757      027 445 7164**  
[gibson.plumbing@xtra.co.nz](mailto:gibson.plumbing@xtra.co.nz)

## Funding boost for fixing potholes

Transport Minister Hon Simeon Brown has announced a significant boost in funding to repair potholes on State Highways and Local Roads. And for MPs Carl Bates (Whanganui), Barbara Kuriger (Taranaki-King Country) and David MacLeod (New Plymouth), it's especially welcome news. The record increase in funding was a key National Party promise during last year's election campaign. "NZTA has confirmed that

over the next three years the agency will deliver a record \$2.07 billion for State Highway Pothole Prevention and \$1.9 billion for Local Road Pothole Prevention." Barbara Kuriger said. The Taranaki region have seen a big increase in its local road allocation, increasing by 43% to \$58 million. Carl Bates said roads in South Taranaki, especially off the main roads needed urgent attention, which can now proceed. "Constituents regularly give me feedback about

the challenging state of our roads" Bates said. David MacLeod was delighted with the news. "Local roads have been a major issue for several years, but now there we can look forward to progress in repairing the roads and making them more resilient" he said. The announcement is good news for roading contractors too, with a clear pipeline of work enabling them to plan the necessary investment in staff and equipment. "Kiwis want potholes fixed

and our roads properly maintained, and this funding boost will deliver real results across the country." Minister Brown said. "Boosting investment in pothole prevention will deliver a safe and efficient network for New Zealanders that increases productivity and supports economic growth." Bates, Kuriger and MacLeod see the significant increase in funding as a real positive for the region.

## Electric cars pose risks for pedestrians

Pedestrians could be twice as likely to be hit by an electric or hybrid car as those powered by diesel or petrol, according to international researchers who looked at UK data between 2013 and 2017. The team suggests one reason may be that electric

and hybrid vehicles are quieter than petrol or diesel cars, particularly in urban areas where ambient noise levels are higher. This idea was reinforced by the finding that collisions were three times as likely to happen in urban areas than rural areas.

Younger, less experienced drivers are also more likely to own an electric car, the authors add, possibly accounting for some of the higher risk. While there were some shortcomings to this research, including missing data beyond 2018

and no vehicle type listed for a quarter of the data on casualties, the team says the findings should be used to understand and safeguard against future traffic injury risk. *Journal of Epidemiology & Community Health*

## Wind farms offset emissions

After spinning for 1.5-1.7 years, a wind turbine has offset the carbon emissions generated across its entire 30-year lifespan, when compared to thermal power

plants. These numbers come from a study which used real construction data from a Hawke's Bay onshore wind farm. The study authors took into account everything

from the manufacturing of individual turbine parts, to transporting them into place, to decommissioning the entire windfarm. They also found that it took six months

or less for a turbine to generate all the energy consumed across its life-cycle. *Journal of the Royal Society of New Zealand*



**TBL**  
TARANAKI BUILDING LTD  
Local Builder  
Shaun Stanley Ph. 0278 186 385



**TBL**  
TARANAKI BUILDING LTD  
SUPPLIES  
OPEN HOURS  
THURS-SAT 9AM - 1PM  
181B TASMAN STREET OPUNAKE



**WHERE YOU GO FOR HEADSTONES**

**33 High Street,**  
**HAWERA - Ph: 06 278 5518**

**209 Coronation Ave,**  
**NEW PLYMOUTH - Ph: 06 759 9975**

[www.HeadstoneWarehouse.co.nz](http://www.HeadstoneWarehouse.co.nz)  
EXCEEDING THE STANDARD SINCE 1914



# Popular community hub still closed 10 months on

The Kapuni War Memorial Hall has not been used since August 3 last year following a fire which damaged the building. As well as being used for community events, the hall had also hosted bowls and been used by the nearby Fonterra Lactose and Todd Natural Gas plants. Fire brigades from Manaia, Kaponga and Okaiawa attended the fire in which there was damage to the inside and outside of the building. A 47 year-old man was later arrested and charged with arson.



The Kapuni War Memorial Hall.

As well as the local community, other hall users included Taranaki Bowls and the nearby Lactose and Natural Gas plants. The continued closure has meant the hall committee not being able to raise the revenue it would normally have received from groups using the hall.

An added problem is the delay it has taken to get the insurance sorted out.

“We honestly thought we would have been home and hosed by now,” said Olivia. “We didn’t anticipate such a struggle to get it signed off with the insurance.”

“The committee are hoping

to achieve a resolution with their insurance company and move ahead to welcoming back the community in the very near future.”

She says there is some consolation in that an arrest was made.

“That doesn’t take anything away from his one moment of madness though,” she said.

Taranaki Coastal Community Board chair Andy Whitehead who is also chair of the Oaonui Hall Committee said he sympathised with the difficulties involved in keeping a local country hall going.

Board member Monica Willson said that given what the Kapuni Hall had been through she would support paying the full amount being asked for.

The board voted to grant the full \$10,999.

## Board support for Coastal Care

The Taranaki Coastal Community Board has voted to give Coastal Care a helping hand to upgrade its medical equipment.

that these are eyescopes and earscopes which can be used to look for anything in the eye or the ear, and their uses include checking up on babies, as well as for pre-school checks.

The ones they have had been bought second-hand and needed replacing. She said they needed four new ones but were only asking for enough to pay for two. While there are hand-held models available, the wall-

set ones are seen as more reliable, she said.

The board voted to grant the full amount being asked for. “This is something our community actually needs,” said deputy chair Sharlee Mariekura.

Board chair Andy Whitehead agreed.

“Having young members in my extended family we should do as much as we can to support it,” he said.



# ELECTRICAL

OPUNAKE

- All Cowsb d Wiring
- Farm Control Sy tems
- Domestic Wiring
- Electrical Insp ctions
- Effluent System wiring

Ph: Craig on 027 207 7775

craigcorriganelectrical@gmail.com



WINDOWS AND DOORS

## CREATORS OF THE ORIGINAL RANCHSLIDER

### Fisher Taranaki

50 Rimu Street, Strandon, New Plymouth

**06 758 5068**

fisherwindows.co.nz

Powered by  altus Window Systems

 window & glass association nz member

 Proudly NZ Made & Owned

## Taranaki’s hearing care specialists are open and hear for you!

At Central Audiology, we are doing everything possible to ensure that our clinics are safe for you. As locals, we really care about our community.

Our services:

- Hearing assessments
- Tinnitus
- Hearing aids
- Wax removal (microsuction)

**100% Taranaki** owned & operated since 1998



**CALL US: 0800 751 000**

Stratford c/o Avon Medical Centre  
Hawera cnr Victoria & High St  
New Plymouth 20 Robe St



### Central Audiology

TARANAKI

# BUDGET 2024 - SHIFTING GEARS



**Backing our Regions** with \$1.2 billion for the Regional Infrastructure Fund to turbocharge rural communities.



**Getting tough on rising crime** with \$651 million for 500 more police officers and the tools they need to do their job.



**Supporting KiwiRail** with \$200 million from the roading and rail infrastructure fund of \$2.68 billion.



**Supporting our Defence Force** with \$163 million for pay and \$4 million for levelling up veteran services.

[www.nzfirst.nz/budget-2024](http://www.nzfirst.nz/budget-2024)

[nzfirst@parliament.govt.nz](mailto:nzfirst@parliament.govt.nz)

Funded by the Parliamentary Service. Authorised by W. Peters, Parliament Buildings, Wellington



## NEW ZEALAND FIRST



# Promises to meet Climate targets hot air

The National Government’s first Budget has shown that its promises to meet climate targets are just hot air. It has cut more than \$3 billion in climate-related work, precisely when we need to step up and protect our planet for future generations. This decision affects everyone,

## The Cottage

Rest Home - Opunake



- \* Respite Care
- \* Day Care
- \* Meals on Wheels

Enquiries welcome at the Cottage, 11 Bayard Street, Opunake or Phone 7609



## AGRIMEC AUTOS 2022

Phone: 06 761 8999



**WE WILL BE CLOSED FRIDAY JUNE 28  
RE-OPENING ON MONDAY JULY 1**

*Opunake's Biggest Range of Tyres*  
Come in and see us for a quote. We also stock a big range of batteries and automotive accessories.

**38 IHAIA ROAD, OPUNAKE**  
**Email: agrimecauto2022@gmail.com**



GLEN BENNETT  
LABOUR LIST MP

especially those of us here in Taranaki who are deeply connected to the land. The Climate Emergency Response Fund has been slashed, affecting programmes like Warmer Kiwi Homes, which has helped tens of thousands of homes become warmer and more energy-efficient. Projects aimed at transitioning to fuel alternatives and a cleaner economy are being deprioritised. New Zealand is accelerating away from our climate targets and the decarbonised economy we know we need. As dairy farmers and rural workers, you are at the

forefront of managing and caring for our environment. The Government’s cuts come as it tries to push through unpopular, undemocratic legislation that harms the environment. National’s Fast Track Approvals Bill makes sweeping changes to the Resource Management Act, allowing destructive coal mining and undoing years of work to clean up our rivers. And we in Taranaki know how important it is to clean up our waterways, with our region leading the nation in riparian planting and ongoing efforts to improve water quality. People I speak to here in Taranaki are worried about their kids’ and grandkids’ futures being recklessly traded for short-term profits and tax cuts that don’t even cover the increasing cost of living. This government has also just announced plans to cut up to a third of staff at the Ministry for the Environment, which leads work in key areas like emissions reduction, climate adaptation, waste disposal, and resource management

policy. We will lose the invaluable expertise of those working on practical solutions to protect our land, sea, air, and freshwater—resources meant to support the work you do to continually improve our land and waterways. At the same time, funding cuts from key research institutions like NIWA, the chief science advisor at DOC, and Callaghan Innovation will impact our country’s knowledge and understanding of these issues and their solutions. The list goes on, with cuts to the Jobs for Nature programme that boosts regional biodiversity, the Community Renewable Energy Fund, the Energy Emissions Reporting Scheme, the Community Environment Fund, and the Energies Education in Communities programme. A responsible Government would focus on meeting our climate targets and taking steps to ensure our communities’ resilience and quality of life. We need to build on our strong research

and evidence base to make the best decisions for our country. As farmers, you are already part of the solution. Your efforts in sustainable farming, managing your land responsibly, and protecting local biodiversity are crucial. I’m calling on the Government to face the facts and acknowledge the emissions implications of these cuts. The extreme weather our country has experienced highlights the urgent need to respond and adapt to the climate emergency. Thank you for the good environmental work you are doing. Together, we can continue to push for policies that protect our land, our livelihoods, and our future - because our children and grandchildren deserve our hard work today for their future.

Glen Bennett  
Labour List MP based in Taranaki  
Spokeperson for Economic Development & Associate Energy

## He Waka Eke Noa: Federated Farmers say goodbye and good riddance

Federated Farmers say they welcome the Government announcement that the He Waka Eke Noa partnership will be disestablished immediately. “The previous Government were too focused on pricing farmers, driving blindly towards unachievable, political, unscientific methane reduction targets,” Federated Farmers president Wayne Langford says. “There was a complete disregard for the significant and unjustifiable costs this would place on

hardworking farming families and the wider New Zealand economy.” Langford says Federated Farmers would never accept a plan that would see 20% of sheep and beef farms, and 5% of dairy farmers, priced out of existence. “From day one Federated Farmers made it clear that we had three firm bottom lines when it comes to climate policy that we were unwilling to compromise on,” Langford says. “As soon as it became clear He Waka Eke Noa wasn’t going to be able to meet

those bottom lines, that’s when we walked away from the negotiating table.” Federated Farmers’ bottom lines were that methane targets would be reviewed, viable and cost-effective tools would be available for farmers, and no emissions leakage would occur. “We can see those bottom lines explicitly reflected in today’s Government announcement and that gives us a lot of confidence for the future,” Langford says. “There is a clear acknowledgement that Kiwi farmers are going to need tools and technology so we can reduce emissions. “It’s positive to see the Government continuing to support the development of these practical tools that are of critical importance to the New Zealand economy. “The Government have also acknowledged that it makes no sense to send jobs

and production overseas, while less carbon-efficient countries produce the food the world needs.” Langford says that the Government have already publicly committed to a review of the current unscientific methane reduction targets later this year. “The establishment of a new pastoral sector group presents the opportunity for a fresh start for discussions about climate policy and biogenic methane,” Langford says. “We look forward to discussing this further with the Government as Terms of Reference are developed.” “Federated Farmers will continue to advocate strongly on behalf of grassroots farming families and rural communities for climate policy that is fair, scientific, and affordable.”

## Your Taranaki MPs are here to help you.

**Carl Bates** MP for Whanganui

Whanganui • South Taranaki • Stratford  
carl.batesmp@parliament.govt.nz • [www.national.org.nz/carlbates](http://www.national.org.nz/carlbates)



**Barbara Kuriger** MP for Taranaki-King Country

barbara.kurigermp@parliament.govt.nz  
[barbarakuriger.national.org.nz/](http://barbarakuriger.national.org.nz/)



**David MacLeod** MP for New Plymouth

david.macleodmp@parliament.govt.nz  
[www.national.org.nz/davidmacleod](http://www.national.org.nz/davidmacleod)





Funded by the Parliamentary Service. Authorised by Barbara Kuriger, Parliament Buildings, Wgtn.



## DOOREYS DOORS

TARANAKI GARAGE DOOR INSTALLATION

### OUR SERVICES

- ✓ Timber doors
- ✓ Roller doors
- ✓ Sectional doors
- ✓ Garage door repairs
- ✓ Merlin motor supply & installation

CONTACT JARED BARRON

027 208 6113

[sales@dooreysdoors.com](mailto:sales@dooreysdoors.com) [www.dooreysdoors.com](http://www.dooreysdoors.com)



# Primary healthcare voice amplified by sector group accord

The two leading independent advocates for primary healthcare have signed an agreement to work together to tackle problems leaving communities without GPs and unaffordable consultation fees.

The memorandum of understanding between the General Practice Owners Association, and General Practitioners Aotearoa, will allow greater collaboration to amplify the voice of a sector besieged by funding and labour issues.

GenPro acting chair Stephanie Taylor said that general practice is unsustainable under the current model, and government must urgently increase funding to offset the rise in GP labour, operational and compliance costs.

“Our new memorandum of understanding will support collaboration between the only two general practice advocacy groups that are fully independent of government and can therefore strongly promote and advocate for their respective members,” Dr Taylor said.

Dr Buzz Burrell, chair of General Practitioners Aotearoa, said working together would enhance efforts to ensure continuity of high-quality patient care accessible to communities.

“It’s important we



Greater collaboration between the two leading independent advocates for primary healthcare will help ensure continuity of high-quality patient care accessible to communities. Pictured are Dr Buzz Burrell, Chair of General Practitioners Aotearoa, and Dr Stephanie Taylor, Acting Chair of the General Practice Owners Association.

collaborate to effectively represent GPs, general practices and their owners, and give voice to issues that impact their work and, most importantly, the patients they serve.”

The high-level agreement comes as GP and practice owners await Te Whatu Ora’s annual statement, which sets the maximum a GP can charge based on

funding allocated in the 2024 Budget.

Many GPs are deciding enough is enough and retiring or closing their practices.

Meanwhile practices are facing higher costs due to rising prices, compliance, and labour shortages, especially of nurses lured by higher pay in the public sector.

Both associations agree that

an effective approach to sustainable care is proper investment in general practice, while retaining and increasing numbers of GPs.

“Huge investment in general practice is needed to address the long-term underfunding of GPs and practices, which are the central pillar of primary healthcare,” Dr Burrell said.

## National Party to launch Rural Nats group at Fieldays

The National Party is launching the ‘Rural Nats’ at Fieldays this week.

The Rural Nats is a new special interest group within the National Party focused on rural people and issues.

The group will work to build on National’s proud history of advocating for rural communities by better connecting rural people to the National Party and giving them a strong voice within the Party.

Rural Nats will also help to develop rural and agriculture policy and to identify and

foster future rural leaders for the National Party.

National MPs with deep personal connections to farming and rural communities from each of the Party’s five regions will lead the Rural Nats in their respective area. They include Grant McCallum, MP for Northland in the Northern region; Barbara Kuriger, MP for Taranaki-King Country in the Central North Island region; Mike Butterick MP for Wairarapa in the Lower North Island region; James Meager MP for Rangitata

in Canterbury Westland; and Miles Anderson MP for Waitaki in the Southern region.

These MPs are part of a large group of National MPs with farming, agriculture and horticulture backgrounds who understand just how important the rural sector is to New Zealand’s economic success.

Visitors to Fieldays can find out more about the Rural Nats at the National Party’s stand in the Rural Living Marquee – site RM46.

They can also meet and talk with the Prime Minister and National’s rural MPs who will be at the stand throughout the week.

Authorised by J de Joux, 41 Pipitea Street, Wellington

- + RUST REPAIRS
- + WOF RUST REPAIRS
- + EXHAUSTS
- + PANEL & METAL FABRICATION
- + FULL RESTORATIONS

TALK TO ELMO TODAY

027 262 7845 + [ELMOSGARAGE@HOTMAIL.COM](mailto:ELMOSGARAGE@HOTMAIL.COM)

CUSTOMS • CLASSICS • LOWRIDERS

YOUR MAINTENANCE AND REPAIR SPECIALIST FOR ALUMINIUM WINDOW, DOORS AND SLIDERS.

Coastal conditions are hard on aluminium joinery.

We maintain and replace broken and corroded joinery hardware from:

- Window handles & stays
- Sliding door locks & wheels
- Hinge door locks and hinges

With over 20 years industry experience. Based in Opunake servicing central south Taranaki area.

COASTAL ALUMINIUM SERVICES

Aluminium Joinery Repairs & Maintenance

PHONE: PHIL 021 372 232

EMAIL: [PHIL@COASTALALI.CO.NZ](mailto:PHIL@COASTALALI.CO.NZ)

WEB: [COASTALALUMINIUMSERVICES.CO.NZ](http://COASTALALUMINIUMSERVICES.CO.NZ)

Sign Making • Vehicle Graphics • T-Shirts

Logo Design • Business Cards • Building Signage

[www.zodiacsigns.co.nz](http://www.zodiacsigns.co.nz) | 06 278 6224

essential service from \$2,900

HARDINGS FUNERALS

because you are at the heart of everything we do

ph: 06 278 8633

email: [funeraldirector@hardingsfunerals.co.nz](mailto:funeraldirector@hardingsfunerals.co.nz)





**Taranaki wide sales, hire and service.**  
**Free delivery, competitive prices.**

**MOBILITY SCOOTERS**  
and all living aids - we'll help you  
with whatever you need.

**Kevin & Marilyn Bromell**  
**154 PRINCES ST - HAWERA**  
Ph: 06 278 8072 - Freephone 0800 765 763  
[www.mobilityandmore.co.nz](http://www.mobilityandmore.co.nz)



Dave's available for all farm maintenance digging and all landscaping work.

**S.O.S.**  
Specialist Outdoor Services  
**call 027 605 8437**  
**31 King Street - Opunake**

*Don't be shy!*  
**DID YOU RECENTLY Graduate?**

We would love to share your special day with our readers! Send in your photo and details

**to: [editorial@opunakecoastalnews.co.nz](mailto:editorial@opunakecoastalnews.co.nz)**





**50 UNION ST HAWERA**  
06 278 7044  
[info@hawerakitchens.co.nz](mailto:info@hawerakitchens.co.nz)  
[www.hawerakitchens.co.nz](http://www.hawerakitchens.co.nz)

# Early Christmas at Kaponga WI

A tinge of Christmas was everywhere for the June meeting of Kaponga WI held at the home of Carolyn Nicholas in New Plymouth. Carolyn, Diane West and Margaret Arbuckle hosted the mid-winter Christmas on a bleak winter's day.

The thought was 'You can learn a lot about a person from the way they handle lost luggage, losing a rugby game or tangled Christmas lights.' The roll call "the furthest you have ever travelled on Christmas day." Most only travelled locally but some had ventured to the Gold Coast, London, and Switzerland.

President and delegate to the recent conference held in Palmerston North Jo Ellis gave an excellent report on the conference. Very interesting hearing the number of donations from members nationwide. Sad to read of the decrease



President Jo Ellis, Secretary Fiona Collins and Treasurer Sharyn Hurley getting a gift from Santa.

in member numbers. A donation was given to The South Pacific fund.

Several members are to attend the Federation mid-winter get together in Hawera.

After a delicious Christmas themed lunch a couple of activities were enjoyed and then a bell could be heard in the distance which signalled the arrival of Mr and Mrs Claus in their amazing clothing and a sack over his shoulder. Mother Christmas shared sweets while Santa distributed gifts.

A fun and happy day for all.

Competition results. Christmas Gift Wrapped Bottle. 1. Dene Lines. 2. Dorothy Hughes. 3. Carolyn Nicholas. A Christmas recipe to share. 1. Carolyn Nicholas. 2. Nancy Stokes and Jo Ellis. 3. Diane West.

## Take action this Bowel Cancer Awareness Month

Bowel cancer is the second highest cause of cancer death in New Zealand, with over 1,200 people dying each year, as many as breast and prostate cancer combined. June is Bowel Cancer Awareness Month, so Kiwis are urged to learn the symptoms and take action this winter.

"We are losing far too many loved ones to this disease every year, and we shouldn't be. Bowel cancer is curable in 90% of cases if caught early enough. Early detection and prevention are key, and that's why our

focus this June is symptom awareness," says Rebekah Heal, General Manager at Bowel Cancer New Zealand (NZ).

The inspiration behind the Bowel Cancer Awareness Month campaign this year is Naomi Argyle, 45, a stage 4 bowel cancer patient given weeks to live. Naomi wants to see people act on their symptoms and get checked.

"I feel like I have to shout it from the rooftops, making noise so that if just one other person like me will go and get checked, and jump up and down if you have symptoms to get tests," says Naomi.

This June, there will be symptom awareness posters in shopping mall bathrooms,

street posters, on major billboards, and on the backs of buses nationwide. Bowel Cancer NZ will also be at Fieldays and the upcoming General Practitioners Conference to help get the word out.

"Telling my girls was the worst thing I have ever done in my life... That's what's making me want to shout about this when I still can - to stop other families having to go through this," says Naomi.

Bowel Cancer NZ has developed an online symptom checker, which 1,500 Kiwis utilised last year. The charity also has awareness resources available to download and order via their website.

"We hope Kiwis take action this June and help us make some noise for Naomi. Know the symptoms, get checked and help raise money for this important cause," says Rebekah Heal.

Visit [bowelcancernz.org.nz/awareness-month](http://bowelcancernz.org.nz/awareness-month) to:

- Do the online symptom checker.
- Host an awareness event.
- Advocate for lowering the screening age and for new bowel cancer medicines.
- Set up a fundraiser to help beat bowel cancer.
- Donate to fund this vital mahi so fewer lives are lost to this silent killer.

## Women who use cannabis heavily may be more likely to die of heart disease

Women who are heavy cannabis users throughout life may have a higher risk of dying from heart disease than women who don't use cannabis at all, but the same is not true for men, according to an international study. The team used survey data on how frequently 121,895

people in the UK used cannabis throughout their lives, and looked at deaths from any cause, as well as deaths from heart disease and cancer specifically over about a decade. After adjusting for other lifestyle factors, the researchers found a link between heavy long-term cannabis use

and an increased risk of death from heart disease in women, but not in men, and they didn't find any links between cannabis use and deaths from other causes, including cancer, in men or women.

JAMA Network Open

**HOW ARE YOU GETTING ON WITH YOUR AB SOLUTIONS?**  
**We're here to help!**

*Design & Fabrication*

**Coastal Welders**

**06 752 8138** **027 255 8677**

Email us at [coastalwelders@xtra.co.nz](mailto:coastalwelders@xtra.co.nz)  
**WAREA**



# Eighty years for Hawera Horticultural Society



**Hawera Horticultural Society president Paul Lander cuts the cake.**

Eighty years ago today (June 9) the Hawera Horticultural Society held its first meeting. On Sunday Society members met at the Hawera Club for a celebratory lunch.

“The membership is getting bigger and it’s getting younger,” Society president Paul Lander told everyone. “We’ve gone from having two one day shows a year to having three two-day shows.”

The Society’s first president was Harry Thrush. Meremere farmer Paul Lander has been doing the job for the last 11 years.

The Society was not the first horticultural group to be formed in Hawera. There had been a Hawera Horticultural Association formed in 1880.

“They held shows and did all the things we do,” said Paul. He says the Association went into recess in 1900 then “started again with a hiss and a roar” before disappearing in 1914.

When the Society was formed in 1944 it appeared the former group had been forgotten and there was no

## National voters concerned

National Party voters are concerned about the risk of corruption and the undermining of democracy if the Fast-track Approvals Bill is passed, according to a new Horizon Research survey..

The poll covers a range of dimensions related to the controversial legislation and highlights concern amongst the National Party support base over the undermining of democracy, the risk of corruption, the return of previously prohibited practices, and the threat to conservation land and oceans.

Greenpeace Aotearoa

executive director Russel Norman says, “These poll results show how badly wrong Christopher Luxon and his extremist coalition partners have got it with the Fast Track Bill. New Zealanders are very concerned and even National Party voters are expressing considerable reservations.

“New Zealanders treasure the wild places of Aotearoa. They don’t want to see forests and oceans turned to open-cast mines. They don’t want to see rivers and lakes turned to sewers, and they don’t want to see precious wildlife condemned to

extinction.”

The poll shows that 76% of National voters are concerned that currently prohibited activities (like dumping raw sewage into the ocean) could be permitted under the fast track.

It shows 41% of National voters are concerned about the fast track enabling mining on conservation land, and 53% of National voters are concerned that developments that have been stopped in the Supreme Court (like seabed mining in a blue whale habitat) could be allowed to go ahead.

Don’t leave them Wondering...  
Plan Ahead Today





**SOUTH TARANAKI  
FUNERAL SERVICES**

Ph: 06 2788 088

FUNERAL DIRECTORS  
ASSOCIATION OF NZ  
MEMBER

CALL OUR FRIENDLY SALES TEAM AT THE



OPUNAKE & COASTAL  
**NEWS**

23 Napier St, Opunake  
**06 761 7016**

See how our high readership rate  
can work for you

Come **hear** what  
you’ve been missing



**100% Kiwi  
Owned**

Proud to be part  
of your local  
community

Your local hearing expert, **Lisa Keen**, is here to help you hear all the sounds on the job. Don’t wait to get the quality care you deserve. Call today to start your journey with better hearing.



Call (06) 757 8380  
280 Devon St West  
New Plymouth  
**Lisa Keen, AuD, MNZAS**

 **LISA KEEN  
audiology**

## SHOE & BOOT SALE



Winter Shoes are available!

by **SCARPAS** David Deacon

Hours: We close at 4pm

Also **SHOE, BAG & LEATHER REPAIRS**  
**244 Broadway - STRATFORD**  
**Ph (027) 493 3549**



# Help shape the rules on Taranaki’s freshwater

Changes are coming to how farmers, industry, businesses and communities use freshwater and Taranaki Regional Council wants the public’s help to shape the new rules.

The Council has organised 16 drop-in sessions from 17 June to 1 July where staff will be on hand to answer questions about proposed freshwater targets aimed at improving water quality in Taranaki’s rivers and streams in the short, medium and long term.

Chair Charlotte Littlewood says the drop-in events are being held across the region and are a great opportunity for those who will be affected by proposed changes to give feedback ahead of targets and limits being set out in the new Taranaki Land and Freshwater Plan.

“This community conversation is really where the rubber hits the road in terms of setting the rules around how we balance competing pressures on our waterways so we want to hear from as many people as possible,” Mrs Littlewood says.

“We’ve been talking with

the community for a couple of years now as we work towards notifying Taranaki’s Land and Freshwater Plan in 2025. We’ve heard the region’s views on freshwater management units, the vision for freshwater and the environmental outcomes people would like to see.

“Now we’re asking about actual targets. What levels of E. coli, sediment and nutrients in our waterways are acceptable? What limits should be put on how much water can be taken out of a waterway? These are vital questions in establishing the rules.”

The targets will impact all those who use water or whose business activity impacts freshwater bodies. This includes farmers who have a dairy effluent consent or a consent to take water, as well as business owners with a consent to use water. Rule changes around sediment will also affect those carrying out earthworks.

“We’re also expecting to hear from people across the region who cherish our hundreds of waterways. You might be worried that freshwater ecosystems are under too much pressure or your local stream isn’t the way you remember it.



**Stony River Okato.**

“This is your chance to help shape the rules so please get involved and have your say.”

As well as talking to Council staff at drop-in sessions, people can have a say online by going to [www.trc.govt.nz/helpshapetherules](http://www.trc.govt.nz/helpshapetherules) from 10 June to 2 August. The webpages feature a survey on the key issues, consultation documents and technical information. There will also be an online session on 3 July where the public can ask questions via Zoom.

There are two \$200 Prezzy Card up for grabs for those who take part in the online consultation.

Drop in Sessions. 17 June. Ōkato - Hempton Hall, 72 Carthew Street, 10am-1pm. Ōpunake - Sinclair Electrical and Refrigeration Events Centre, Tasman Street, 3pm-6.30pm

18 June. Hāwera - TSB Hub East lounge, Camberwell Road, 10am-1pm. Kaponga - War Memorial Hall, 57 Victoria Street, 3pm-6.30pm  
20 June. Urenui -

Community Centre, 13 Takiroa Street, 11am-2.30pm. Uruti - Community Hall, 1672 Mokau Road, 4pm-6.30pm.

21 June. Pātea - Hunter Shaw Building, 29 Victoria Street, 10am-1pm. Waitotara - Hotel & Store, 1 Kaipo Street, 3pm-6.30pm

24 June. Waitara - North Taranaki Sport and Recreation Centre, 17 Princess Street, 10am-1pm. Bell Block - Fred Tucker Community Centre, 130 Parklands Avenue, 3pm-

6pm.

25 June. Inglewood - TET Stadium, 1 Elliot Street, 10am-1pm. Tarata - Commuity Hall, 1831 Tarata Road, 3pm-6.30pm

27 June. Stratford - Centennial Rooms, Fenton Street, 10am-1pm. Te Wera - Valley Lodge, 3560 Ohura Road, 3pm-6.30pm.

1 July. New Plymouth - Merrilands Hall, 259 Mangorei Road, New Plymouth, 10am-1pm. Bellringer Pavilion, Pukekura Park, 5pm-8pm

DEKEN  
MOTORS

VEHICLES FOR YOUR LIFESTYLE

(06) 759 9943  
Ton: 0274 938 146

<p><b>\$16,990</b></p> <p>2011 Toyota Vanguard 2.4S 7 seater, Leather, Great car, 87kms</p>	<p><b>Now \$46,990</b></p> <p>2024 Toyota Corolla CROSS Z 2 to choose, Black/Silver, AWD, 1.8 Auto, Brand new</p>	<p><b>From \$28,990</b> Immaculate</p> <p>2018/19 Toyota C-HR G SPEC 1.8 33kms, Hybrid, 3 to choose - white, black, red</p>	<p><b>From \$39,990</b></p> <p>2020/21 MINI Cooper CROSSOVER ALL 4 SE, black, white, 15kms, 49kms</p>	<p><b>From \$12,990</b> Economy</p> <p>2014-17 Toyota Aqua 1.5 Hybrid 5 to choose, all low kms, great colour selection</p>
<p><b>Now \$41,990</b></p> <p>2018 Ford Ranger WILDTRAK 2 owners, great condition, leather, Tow Bar, 95kms</p>	<p><b>Now from \$27,990</b></p> <p>2020/23 Toyota Corolla TOURING WXB White/Black, Hybrid, Leather, Auto, 1.8L</p>	<p><b>Now \$43,990</b></p> <p>2021 Mazda CX-8 TAKAMI NZ new, 4WD, Sunroof, 2.2L, Diesel, Full leather, 54kms</p>	<p><b>Now from \$27,990</b></p> <p>2018/19/23 Toyota Hiace 2.8 DSL 4 to choose, 2WD &amp; 4WD - white, silver</p>	<p><b>From \$22,990</b></p> <p>2018 Mazda CX-3 Limited 2L Top of the line, leather, 39kms/50kms, charcoal, white</p>
<p><b>Now from \$16,990</b></p> <p>2014/15/19 Mitsubishi Outlander PHEV Full options, G Spec, 3 to choose - blue, black, silver, low kms</p>	<p><b>Now from \$11,990</b></p> <p>2007/08/11 Mitsubishi Delica 4WD, 7 seater &amp; 8 seater, Silver/Pearl</p>	<p><b>From \$32,990</b></p> <p>2014/15/16 Land Rover Evoque, HSE Dynamic 2L, SI, Pan roof, full options, 3 to choose, Gold/Red</p>	<p><b>Now from \$14,990</b></p> <p>2017 Nissan Leaf, 5 Door, 30KW 2 to choose, Grey/Blue, low kms</p>	<p><b>From \$54,990</b></p> <p>2023/24 Toyota Hiace Commuters 2 new vehicles, 10 &amp; 12 seater, 2.8 Diesel, 2.7 Petrol</p>
<p><b>Now from \$21,990</b></p> <p>2018/20 Nissan Leaf G SPEC 40 &amp; 60 KW 3 to choose, black, white, blue, low kms,</p>	<p><b>Now \$54,990</b></p> <p>2018 Audi SQ5 As new, 3L, stunning condition, 41kms</p>	<p><b>Now \$27,990</b></p> <p>2013 Lexus RX 450h Mint, Body kit, leather, top of the line, 70kms</p>	<p><b>From \$17,990</b></p> <p>2009/11/17 Toyota Vellfire 2.5, 3.5, V6, 4 to choose, 7/8 Seater</p>	<p><b>\$39,990</b></p> <p>2016 Toyota Hilux EXTRA CAB SR 4WD, Great service history, tow bar</p>





# Talking Taranaki

## 2024/34 Long-Term Plan adopted

Protecting the environment is front and centre in Taranaki Regional Council's Long-Term Plan (LTP) with new investment to safeguard the region's biodiversity, deliver freshwater improvements and address climate change.

"We're looking to the future with this Plan and how we can address the many challenges our amazing region is facing," says Council Chair Charlotte Littlewood.

"There's funding for our key environmental work programmes to ensure we build on the Council's freshwater and biodiversity mahi and we've responded to our community's feedback on responding to the threat from climate change."

The 10-year plan for the region includes an overall rates increase of 16.3% for 2024/2025. While in percentage terms this is higher than previous years, for most Taranaki ratepayers the financial impact will be measured in tens of dollars over the course of a year. The overall rates rise for year two of the Plan is 13.23% and is 10.19% in the third year.

The Council sought feedback on six key issues in March and April with some submitters also sharing their thoughts at hearings on 6 May before deliberations by the Councillors. The LTP was adopted at the Ordinary Council meeting on 14 May and becomes active on 1 July.

\$540k

### Improving resource management

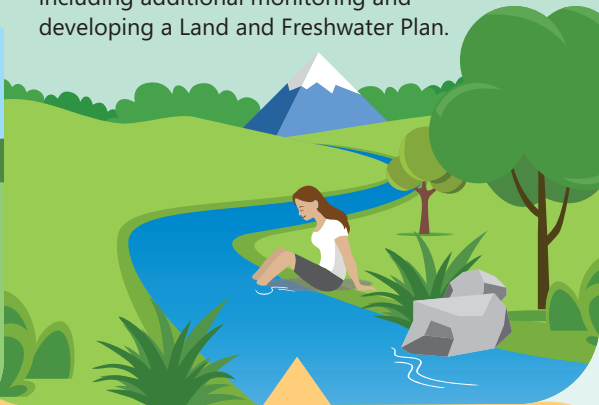
We will create a regional spatial plan to guide development across Taranaki and drive better alignment with the region's four councils.



\$4.04m

### Delivering on freshwater

We will implement a new regime with a focus on core activities to improve freshwater management, including additional monitoring and developing a Land and Freshwater Plan.



\$440k

### Protecting indigenous biodiversity

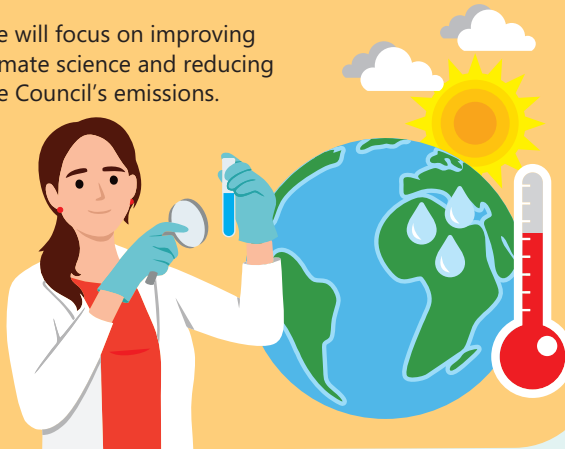
We will take a strong role coordinating biodiversity work across the region, including a review of the Taranaki Biodiversity Strategy.



\$915k

### Addressing climate change

We will focus on improving climate science and reducing the Council's emissions.



## Freshwater: You help us shape the rules

Come along and talk to us

Big changes are coming to how farmers, businesses and our community use freshwater and we want your help to shape the new rules.

We have a series of drop-in sessions coming up in June and July that are open to everyone who cares about our rivers or streams or whose work or business relies on water such as farmers, businesses and industry.

We'll have experts on hand to answer your questions about what can be done to improve water quality and protect Taranaki's rivers and streams in the short, medium and long term as we work towards creating a new Land and Freshwater Plan.

We're looking to set targets for the levels of E. coli, sediment and nutrients and targets and limits on how much water can be safely and sustainably taken from waterways.

These targets will directly impact on many business activities such as how much water can be taken by farmers and industry so it's vital we hear from those impacted so we can shape the new rules together.

The changes will also affect hill country farmers, farmers who have an effluent consent or those planning earthworks.

As well as popping-in anytime at the drop-in sessions, you can find out more online and take part in a survey from 10 June to 2 August by going to [trc.govt.nz/helpshapetherules](https://trc.govt.nz/helpshapetherules).

17 JUNE

#### Ōkato

Hempton Hall  
72 Carthew Street  
10am-1pm

#### Ōpunake

Sinclair Electrical and Refrigeration Events Centre  
Tasman Street  
3pm-6.30pm



3 JULY



Online  
6pm-8pm

For details visit:  
[www.trc.govt.nz](https://www.trc.govt.nz)

### YOUR COUNCILLORS

**New Plymouth Constituency** Tom Cloke: [tom.cloke@trc.govt.nz](mailto:tom.cloke@trc.govt.nz) - Susan Hughes: [susan.hughes@trc.govt.nz](mailto:susan.hughes@trc.govt.nz) - David Lean: [david.lean@trc.govt.nz](mailto:david.lean@trc.govt.nz)  
Charlotte Littlewood (Chair): [charlotte.littlewood@trc.govt.nz](mailto:charlotte.littlewood@trc.govt.nz) - Craig Williamson: [craig.williamson@trc.govt.nz](mailto:craig.williamson@trc.govt.nz)  
**North Taranaki Constituency** Mike Davey: [mike.davey@trc.govt.nz](mailto:mike.davey@trc.govt.nz) - Donald McIntyre: [donald.mcintyre@trc.govt.nz](mailto:donald.mcintyre@trc.govt.nz)  
**Stratford Constituency** Alan Jamieson: [alan.jamieson@trc.govt.nz](mailto:alan.jamieson@trc.govt.nz)  
**South Taranaki Constituency** Donna Cram: [donna.cram@trc.govt.nz](mailto:donna.cram@trc.govt.nz) - Neil Walker (Deputy Chair): [neil.walker@trc.govt.nz](mailto:neil.walker@trc.govt.nz)  
**Taranaki Māori Constituency** Bonita Bigham: [bonita.bigham@trc.govt.nz](mailto:bonita.bigham@trc.govt.nz)

[info@trc.govt.nz](mailto:info@trc.govt.nz)

[www.trc.govt.nz](https://www.trc.govt.nz)

[TaranakiRegionalCouncil](https://www.facebook.com/TaranakiRegionalCouncil)



Working with people | caring for Taranaki



# Consumer launches petition on bank scams

Consumer NZ is launching a petition calling on the government to step in and force banks, digital platforms, and telcos to do more to stamp out scams.

Over the past 12 months, 50% of households reported being targeted by a scammer, totalling over 1 million households in New Zealand. As many as 185,000 households were scammed out of their hard-earned money during the same period.

Consumer’s research found that all New Zealanders are at risk of being scammed, regardless of age, gender, ethnicity, income, or educational attainment.

“New Zealanders are not adequately protected against the growing threat posed by these invisible criminals who are constantly looking for new ways to part them from their hard-earned dollars,” said Jessica Walker, campaigns manager at Consumer.

According to Consumer about \$200 million was stolen from scam victims in 2023. Scammers and scams have evolved to the point they pose a risk to everyone who uses mobile phones, email addresses, social media accounts or the internet in general.

“Many people recognise that scams are a significant problem, but no one is taking

the lead and demanding action. There’s power in numbers, so we’re asking New Zealanders to get behind this cause and push the government to introduce greater scam protections,” said Walker.

“Countries that are taking this threat seriously include Australia, Singapore and the UK. Governments there are upping the ante to protect their citizens, and we are asking the coalition here to do the same.”

Consumer’s petition is calling for banks to refund scam victims unless the victim has been grossly negligent, a national anti-scam framework requiring banks, telcos and digital platforms to take action against scams and outlining their liability if they fail to meet their obligations, and a centralised anti-scam centre where relevant organisations work together to keep us safe.

“Anti-scam centres are being run by governments in Singapore and Australia, but the government here has left it to businesses to regulate themselves. It’s not enough,” said Walker.

Manaaki Tāngata | Victim Support told Consumer that as scams are becoming increasingly sophisticated, it believes society’s response to fraud victims needs to evolve too.

“The impact of fraud can be life-changing for victims, with devastating financial, emotional, social and psychological consequences.

Yet, New Zealand’s response to fraud victims lags behind our attitude towards other crime victims, including what fraud victims

are entitled to under the Victims’ Rights Act,” said Dr Petrina Hargrave, GM for advocacy and strategy at Victim Support.

Dr Hargrave says crime happens because of criminals, not because of victims.



The Aurora taken at Opunake Beach.

Staci Holmes.



# PEGASUS

Rental Cars

Ex rentals also available to purchase. Contact us to find out more!

## NOW AVAILABLE IN SOUTH TARANAKI

### SHORT OR LONG TERM VEHICLE HIRE

◆ MINI BUS

◆ CARGO VANS

◆ UTES

◆ HYBRID OPTIONS

◆ COMPACT

◆ SHORT OR LONG TERM

### Hawera Hours

8am – 5pm Monday to Friday  
Saturday & Sunday by Arrangement

**(06) 755 0648 | 0800 35 45 33**

135-137 High Street Hawera





**www.rentalcars.co.nz | newplymouth@rentalcars.co.nz**



# High temperatures and low river flows likely caused fish deaths

## Graham Kirk

Record high water temperatures and low river levels likely contributed to the deaths of more than 80 fish in two South Taranaki waterways earlier this year, says Taranaki Regional Council.

A report to the Council's Operations and Regulatory Committee revealed 27 fish died in the Waingongoro River and a further 55 fish were found dead in the Kaūpokonui River in January.

An investigation was launched after members of the public alerted Taranaki Fish and Game to the deaths. The affected species included tuna (long-fin eel) and trout.

The investigation revealed that water temperatures in both the rivers were the highest on record and were elevated for several days around the time the dead fish were discovered. Temperatures were up to 5°C warmer than usual for the time of year.

River levels were also particularly low for the months of December and January while oxygen levels in the water were extremely high, reaching levels that are toxic to fish. The investigation found no evidence of a pollution incident.

Abby Matthews, the Council's Director for Environmental Quality, says it was difficult to identify any single cause of the fish deaths.

"It's likely that the combination of high temperatures, low flows and oxygen toxicity all contributed to these events. We'd like to thank the public who brought this to our attention so we could respond quickly. It's important we investigate issues such as this and try to find the cause."

"Unfortunately these types of environmental extremes are likely to become more common with the effects of climate change."

Ms Matthews added that the total number of fish deaths is likely to be higher than the number reported given that some could have been scavenged or washed out to sea prior to the investigation.

# Elephants have names to address each other

International scientists say wild African savannah elephants appear to address each other using name-like calls, much like we humans use names. The team used AI to analyse 469 rumbling elephant calls, and found the AI correctly identified which elephant was being addressed in over a quarter of cases, higher than when the AI was fed 'control' audio for comparison. They then played recordings of the calls to the elephants, some of which were originally addressed towards that elephant. The elephants, including a family known to researchers as the 'Spice Girls,' approached the speaker faster and were more likely to answer with their own calls when the recorded call had originally been addressed towards them.

Nature Ecology & Evolution



Kermit under the Pouakais.



Brand new homes available now at Summerset\*

At Summerset, our retirement villages are designed to make sure you get the best out of your retirement. **Summerset at Pohutukawa Place** is no exception, with a range of brand new homes ready to move in to now.

Our single-storey villas are modern, spacious and warm - just what you need for winter. Plus our new serviced apartments and care rooms mean there's support on hand should your needs change. (Care is subject to availability and eligibility criteria.)

Our stunning new village centre is now open and residents and their families enjoy a range of resort-style facilities including an indoor swimming pool and public café.

Come along to our next Morning Tea and Tour to see why our residents love the Summerset life.

**Morning Tea & Tour**  
**Every Tuesday in June, 10:30am**

Summerset at Pohutukawa Place  
70 Pohutukawa Place, Bell Block  
06 824 8532 | [summerset.co.nz/pohutukawaplace](https://summerset.co.nz/pohutukawaplace)



\*All Summerset homes are sold under a licence to occupy and are subject to availability, and depending on the type of home, eligibility criteria. Summerset does not offer rental accommodation.



While methane-reducing products are coming to market overseas, and products like DSM's 3-NOP have received approval by New Zealand's Environmental Protection Authority, there is still a challenge to design products that will work in our pasture-based grazing systems."

disruption in their brain function when performing activities that required attention, planning, decision-making and controlling impulsivity. The researchers say there is more research that needs to be done to paint a full picture of the impact of internet usage, but it appears internet addiction could be changing teen behaviour during an important stage of development.

analysis technique that studies the different isotopes of plant, animal, and human remains across the site to map how nutrients flowed through the food chain and agricultural systems over time. Their analysis found that around the Middle Bronze Age the diet was mostly based on plants, such as grains and olives, but the presence of sheep, goats, and cattle from the time period also suggests that the animals were occasionally eaten and used for milking.

*Everlasting Café & Restaurant*

---

**Okato**

**\$15.00 T-Bone Every  
Thursday  
Book your Table !!**

**Tel: 0226193802**

*A new Cafe in  
Okato township*

*Great meals:  
Awesome new menu:  
New ownership:  
Children's play area  
Pet friendly (bring your pet for a treat !!)  
Off street parking:*

*Sri Lankan curries  
A selection of Steak dishes  
Takeaway pizza's*

*Sunday evening services*

*We are a faith based café, sharing  
the good word and faith to one  
and all !!*

Check out our  
facebook page  
Everlasting  
cafeokato





# Decisive calls on Australian grocery sector bring New Zealand’s slow progress into the spotlight

Consumer NZ is urging our government to stand up and pay attention to the bold stance a Senate Select Committee has taken on supermarket activity in Australia.

The Senate Select Committee on Supermarket Prices final report has recommended making price gouging illegal and introducing divestiture laws to create powers to break up Australia’s supermarket sector, if players misuse their market power.

“We agree, price gouging should be illegal,” said Gemma Rasmussen, Consumer head of research and advocacy.

“There’s no denying the supermarket sector in Australia has issues, but let’s face it, New Zealanders are facing a higher level of market concentration and our last robust study into the sector uncovered excessive profits. The question now is – has enough action been taken to address this historically problematic sector?”

According to Consumer, the recommendation to give the Australian Federal

Court the power to break up corporations if they abuse their market power or act unconscionably, is seriously worth considering in New Zealand too.

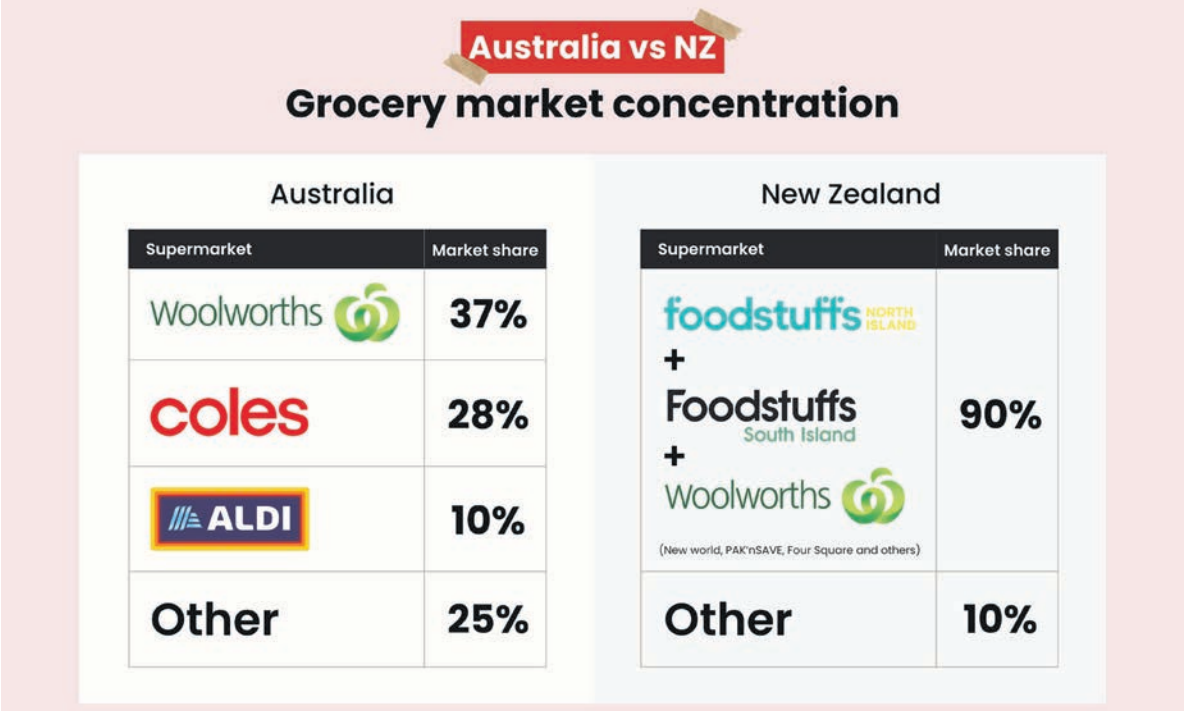
“The big two in Australia have about a 65% market share, and here the duopoly enjoys about 90% market concentration.”

A report recently released by the OECD recognised structural solutions, such as break-ups, could be warranted in New Zealand, given that market concentration in some sectors is so high that regulation will not be sufficient to improve competition enough.

“There’s a reason this recommendation keeps cropping up, and it is because it’s going to take something drastic to create real change,” said Rasmussen.

Consumer’s latest sentiment tracking confirmed that financial concerns relating to the cost of food and groceries have been steadily increasing over the past three years. Three-quarters of New Zealanders list this as their primary concern, trumping all other costs.

A recent Consumer NZ



grocery basket comparison between Australian and New Zealand supermarkets found little difference between the prices. However, the advocacy group says the key difference is the Australian government is tackling the situation there with fire and urgency.

“It’s almost two years since the market study into the grocery sector in New Zealand, and shoppers are yet to feel much relief at the checkouts.”

Later this year, the inaugural report from New Zealand’s Grocery Commissioner will provide an insight into grocery profitability and supplier relations. However, the advocacy group remains concerned that simply ‘shining a light’ on the profitability and supplier relationships in the sector won’t do enough to force meaningful change to benefit New Zealanders, and government intervention will be necessary to fix the longstanding issues in the sector.

“To date, the approach towards our supermarket sector has been soft and steady. We have a commissioner, a new grocery code of conduct, and a progress report on the cards. The question is whether the current course of action is bold enough to clean up our grocery sector and deliver fairer prices for New Zealanders.

“We urge the New Zealand government to take a close look at the Senate Select Committee report and consider what it can learn from the bold and decisive recommendations.”



CENTRE CITY



TSB Festival of Lights

NPDC

**TWO HOURS FREE PARKING**

Enjoy free parking at Centre City when you visit TSB Winter Festival of Lights!

TSB Festival of Lights: Winter Pop-Up is back and ready to light up New Plymouth's CBD from 27-30 June 2024!

Visit the magical Matariki long weekend event with stunning light installations! Centre City is making exploring and enjoying TSB’s Winter Festival of Lights easier by offering two hours of free parking in the Centre City Carpark using the promo code 'WFOL'.

(Offer valid between 5.30 pm and 10.30 pm 27-30 June 2024; head to [centre-city.co.nz/park](https://centre-city.co.nz/park) for how to activate and use the promo code )



@centrecitynp

11 Gill St , New Plymouth

[centre-city.co.nz](https://centre-city.co.nz)

PARK. MEET. SHOP. EAT.





# Plant nursery up and running

RJ & C Nursery is now up and running at the northern end of Tasman Street, Opunake.

The garden shop will sell bedding plants including flowers, flowering shrubs and vegetables initially though there are plans to extend the business as they become more established.

The owners are Joseph and Iri Pierce who have moved to Opunake from Wellington buying the property where the former New Life Nursery operated.

“The smaller stuff is still my forte but we will be getting into fruit trees and larger hedging,” says Joseph who has 20 years experience in horticulture.

“We’re going to propagate most of it ourselves,” he adds but says it will take two years before they’ll be able to sell the larger plants and hedging. “Until then we’ll be providing smaller flowers and vegetables.”

They also sell fertiliser, potting mix, blood and bone, seed potatoes and nutrients such as Greencrop which replenishes the soil along. Other interesting items in the shop include hanging baskets and also Bonzai trees.

Raised on a beef farm in the far north Joseph was initially interested in both horticulture and agriculture but went on to specialise in horticulture.

He was employed by the Wellington District Council for ten years where he was team manager for the revegetation of planting in the Wellington region which also involved trimming back vegetation from roads.

“They’re very staunch in their green belt in Wellington,” he says.

Weed control was another area in which as team leader he oversaw. Part of the job was also connected with plant health which involved

“keeping your plants healthy so they thrive with food and clean ups which included spraying, trimming and pruning.”

He then went on to work for garden centre just north of Wellington for ten years which introduced him to the retail side of horticulture. It was another learning curve of which he comments: “Every day it pushed my knowledge to my next level.”

Owning their own business now is a new experience and an adventure which Joseph is clearly relishing describing it thus far as “fantastic”. He says “I’ve never been a city boy,” and adds with a grin “I just love the long driveways.”

Iri who is “Wellington born and bred” is also enjoying living in a small town. She has worked in retail and in early childhood and will be helping with the repotting and office work.



Joseph outside the garden shop at RJ & C Nursery.

Iri enjoys baking particularly and cooking generally and is also keen on doing jigsaw puzzles.

While they’re still getting established RJ & C Nursery will be open from Thursday to Sunday from 10am till 3:00 pm.

The couple say if the sign outside says they’re open “feel free to just come and look and chat.”

Joseph says he’s always happy to give advice.

The couple have two girls aged 6 and 14. The older girl is attending Opunake High School and “loving it” says Iri.

The family are clearly enjoying combining owning their own business with small town life.

“We love it,” they agree. “We’ve been eating better,” too says Iri.

Outside of working Joseph is keen on sports, particularly rugby league which he’s played. He also likes golf and intends joining the local golf club.

## Mediterranean diet may save your life

A US and Swedish study of more than 25,000 US women who were followed up for 25 years found those who stuck to a Mediterranean diet were 23% less likely to die prematurely from any cause than women on other diets.

The researchers looked into the reasons why, and

say women on the Med diet tended to have a healthier metabolism, lower inflammation, a higher proportion of healthy body fats, better blood sugar control, and a lower body mass index (BMI) than women on other diets

The next issue of the Opunake & Coastal News is coming out on June 27.

Note we now have extra papers in the newspaper stands at Hawera and Stratford.



Propagation of seeds.

NOW OPEN!

RJ&C nurseries and garden shop

Formerly New Life Nursery site

Color galore ....

Seasonal vegetables ...

and flower seedlings ...

Hours : Thur - Sun: 10am - 3pm

(after hours by appointment)

 **RJ & C Nursery**

183 Tasman Street, Opunake

Phone: 06 761 7451 | office@rjcnurseries.com



12 MONTHS INTEREST FREE\*

www.dominator.co.nz

**DOMINATOR**

When it comes to protecting your assets and family, you can't buy better than a Dominator garage door.

SERVICE | REPAIRS | INSTALLATIONS | AUTOMATION

CONTACT US FOR A FREE MEASURE & QUOTE

DOMINATOR GARAGE DOORS NEW PLYMOUTH

contact@dominatornp.co.nz 06 758 3981

\*Terms & conditions apply.

67 Breakwater Rd (up Norma's Way) • NEW PLYMOUTH • PHONE 06 751 5065

FAX: 06 751 5085 • WWW.NEWTONGORDGE.CO.NZ

ALL DOMESTIC & COMMERCIAL JOINERY





• Kitchens • Stairways • Vanities • Lounge Units • Bench Tops • And More

Sick of Nr.8 wire accounting?

Our TEAM will walk along side YOU to achieve your DREAMS

 **Hipp Accounting**  
06 928 5608

 Business Planning

 Budgeting & Forecasting

 Taxation

 On-Farm Experience

 Just a phone call away



**www.hippaccounting.co.nz**





# DWN trustees step down

At the Dairy Women's Network (DWN) Annual General Meeting in October, two Board Trustees, Donna Smit and Mark Heer, will step down as they end their time on the Board after almost ten years.

Trish Rankin, DWN Board Chair, said "Mark and Donna have been invaluable on our Board. Their multiple-terms (three-years per term) as Trustees have added significant value, insights and thinking to make sure we keep on track and deliver for our members."

"We've just celebrated 25-years of DWN excellence, and we are poised for even greater impact and growth. Mark and Donna have been an important factor in helping us take the next step".

Trish says DWN will miss having them around the Board table as a dynamic duo.

"They may approach ideas like chalk and cheese but are fantastic to watch together as they work through how we achieve our purpose and manage our finances and operate as a not-for-profit".

"They have a special balance of personal knowledge and unique abilities that cannot be replicated. Mark is always thinking with an organisational heart and about our people and Donna is amazing at making sure the numbers work, which together with the other Trustees have enabled the organisation to be hugely successful", said Trish.

Mark Heer has 30 years' experience in business across Rural and Corporate banking, manufacturing, wholesale and retail SMEs. He has also held governance roles across these sectors both as a shareholding director and an independent director.

He says his motivation to



Retiring DWN trustees Donna Smit and Mark Heer.

initially join the DWN board was to role model to his work colleagues and daughters that championing diversity and being prepared to step forward into the unknown is a worthwhile endeavour and not one to walk away from.

"The opportunity to give back to the dairy industry through an industry good, not for profit organisation, was also a key factor. I have learnt through my life that the only important thing is what you do, actions rather than words are heard the loudest. My nine years have been full of learning and gaining new perspective and insights and it's been a privilege and honour to serve on the Board", said Mark.

Donna Smit has significant experience as a Chartered Accountant as well as having, with husband Corrie, built up a successful family farming business, owning seven farms in

Edgecumbe and Oamaru, and investments in kiwifruit.

Donna believes that there is a lot of talent behind the farm gate and DWN is instrumental in making sure New Zealand dairy farmers succeed.

"DWN run professional workshops, conferences and webinars for all at the lowest cost with the greatest reach and this is something I respect immensely", said Donna.

Applications for DWN Trustee position(s) have opened.

Trish says "We welcome applicants from diverse backgrounds and experiences and encourage anyone with passion for our mission to apply – regardless of gender. You don't have to be an experienced governance professional or even be a dairy professional – we want your unique skills and your connection to the rural sector".

"We are particularly interested in candidates who have experience as an audit and risk chair or have an entrepreneurial spirit and some business and financial acumen. Above all, we're

looking for individuals who are committed to our mission of supporting and empowering women in the dairy industry."

**TransAg Centre Ltd.**  
AGRICULTURE  
... and proud of it

**KEEP MOVING FORWARD WITH CASE IH.**  
VISIT US AT  
FIELDAYS  
SITE M30

**SPECIAL PRICING AVAILABLE**

**NEW PLYMOUTH**  
65 KATERE ROAD  
PARTS/SERVICE: 06 758 2274  
SALES: PAUL STANTON 027 498 7277

**HAWERA**  
16 GLOVER ROAD  
PARTS/SERVICE: 06 278 5119  
SALES: RAYMOND 027 444 8861

**HIRE THE LORD OF THE TREE RINGS**

**TARANAKI'S LARGEST MOBILE LOG SPLITTER!**  
Splits more than 50 cu/m in 8 hours just about anywhere on your farm.  
Lifts and splits massive rounds straight onto your trailer.  
\$200 per hour + GST including operator.  
FOR MORE INFO, CALL JOE GOODIN  
TEL: 027 688 5372

**POWER CUTS – CAN YOU AFFORD THE RISK?**  
**INDUSTRIAL GENERATOR**  
VISIT US AT THE FIELDAYS - SITE G 95  
Ask about our range of  
**SILENT DIESEL GENERATORS**

**TRAILER OPTIONS AVAILABLE**

- Direct PTO driven (no gear boxes or belts)
- Heavy duty construction (including drive shaft)
- Dials facing cab (one person operator)
- Designed and assembled locally for rugged conditions!
- Three sizes to suit all sheds: 37.5KVA, 62.5KVA and 93.75KVA
- Lower RPM models available

**Sized for:**

- Cow sheds
- Pump sheds
- House standby

**Corkill SYSTEMS LTD**  
Specialists in Dairy Automation Solutions

**0800 10 7006**  
www.corkillsystems.co.nz



# No “silver bullet” for methane reduction but..

Te Puna Umanga Venture Taranaki, the regional development agency for Taranaki, hosted Mooving on Methane, an event aimed at understanding the challenges and opportunities faced by farmers and the dairy industry in addressing methane emissions.

The event featured farmers, scientists, rural professionals, and specialists from organisations such as DairyNZ, Fonterra, Nestlé, Ravensdown, LIC, AgriZeroNZ, Ministry of Primary Industries, and the Climate Change Commission, as well as entrepreneurs from pioneering tech solution companies like Ruminant Biotech, CH4 Global, and Bovaer.

The New Zealand dairy

industry is striving to meet emission reduction expectations from global customers like Nestlé, Kraft/Heinz, Mars, and Unilever. Mooving on Methane, a catalyst event initiated by Venture Taranaki, sought to build awareness of the emerging tools and technologies which could reduce the naturally occurring methane emissions from the burping of dairy cows, which accounts for the majority of these emissions.

“It was important to hear first-hand from those at the forefront of these solutions, their forward plans and possibilities, as well as the enablers and barriers to their successful introduction in Aotearoa New Zealand, given they could play an important role in underpinning the future success of our dairy industry”, says Anne Probert, Director of Strategic and Sector Partnerships, Venture Taranaki.

The common theme? There is no “silver bullet” for New Zealand in reducing methane emissions on-farm, but there are incremental, best-practice farming initiatives that are already being applied today, like pasture and fertiliser management, better breeding programmes, eco ponds, and planting unproductive land, to name a few.



Understanding the challenges and opportunities posed by methane was the focus of a recent event hosted by Te Puna Umanga Venture Taranaki.

However, the event highlighted that the ground is moving quickly on technical and entrepreneurial solutions - especially internationally - and that New Zealand needs to act quickly to ensure it was keeping pace with other major dairying countries. Potentially more impactful solutions like vaccines, methane reducing animal feed supplements, methane inhibitors, and new strains of pasture are being developed, with some already being rolled out internationally.

Within the New Zealand context, AgriZeroNZ, who is 50/50 Government/Private funded, is making some exciting investments in promising startups such as Ruminant Biotech and ArkeaBio. Additionally, DairyNZ and the NZ Agricultural Greenhouse Gas Research Centre is continuing to support research into solutions that are specifically adoptable and viable in our pastoral farms.

However, CH4 Global and Bovear, who presented at the event, highlighted

how their methane reducing feed supplement solutions are already being rolled out internationally, but not in New Zealand. CH4 Global, a natural supplement with Asparagopsis seaweed, specifically cited the regulatory barriers and hurdles that exist in our country as a significant problem. As a result, although their seaweed-based product is grown and developed in New Zealand, it is being scaled and sold in Australia and other parts of the world.

Another question raised at the event, common across many sectors amid the transition to a low emissions economy, is, “who pays for the added cost of the solution?”. Unless premiums can be guaranteed by our major customers, many of the solutions don’t offer farmers and the broader industry a clear return on investment. Questions were also raised about Government support, with Denmark, for example, agreeing to help farmers by subsidising feed additives earlier this year.

Whilst the need to ‘moove’ on methane with urgency was a key focus, Fonterra also emphasised there was much to be won through showcasing our nature-based solutions and best-practice farming methods. Other cooperatives, like Miraka have found ways to compensate their farmers with premium payments, rewarding the adoption of world leading farm sustainability practices.

“With so many livelihoods within Taranaki and Aotearoa interwoven with the dairy industry, we need to ensure its future success,” says Probert. “By rapidly reducing methane emissions on our dairy farms, we can transform our emissions profile as one of the critical steps in ensuring we remain a global leader who meets or exceeds our consumer needs.”

The next issue of the Opunake and Coastal News comes out on June 27.



## CAMPBELL CONTRACTING LTD

**DON'T ACCEPT A LIFT FROM A STRANGER!**

**Our Hiab truck is always available to give you a lift.**

**Truck and trailer for general cartage.**

**Sand for Calf bedding available**



**Rusty 027 280 0743**

office.campbellcontracting@gmail.com

www.campbellcontracting.nz



## Leading Edge Helicopters Ltd..



Locally owned and operated with 30 years experience. For all your aerial spraying / aerial work needs, Taranaki / King Country wide. Call us for a free no obligation quote



**Aerial Spraying**  
**Forestry Spraying**  
**Pasture / Weed spraying**  
**High Water Rate**  
**Fert / Seeding / Urea**  
**Aerial Culling**  
**Aerial Work**  
**Flight Training**

**Call Peter Law 027 237 0039**  
**David Law 027 315 1116**

# IF YOU NEED A MAIZE EXPERT, HERE'S OUR LOCAL CROP.



**For advice on everything from hybrid selection to feeding silage to your herd, call one of our team:**

**ALAN BUNNING**  
AREA MANAGER  
**NORTH TARANAKI**  
027 206 0147

**KIM SHARPE**  
AREA MANAGER  
**SOUTH TARANAKI**  
027 528 0012



## PIONEER

BRAND · PRODUCTS



# Feds call on MPs to support banking inquiry

Taranaki Federated Farmers are calling on the region’s local MPs to get in behind the organisation’s calls for an independent inquiry into rural banking.

“Concerns about banking and interest rates are the number one issue for our members at the moment,” Federated Farmers Taranaki president Leedom Gibbs says.

“We have a lot of local farming families who are under huge pressure this season. Some are struggling to make ends meet with

rising interest rates and reduced incomes.

“It’s been a really challenging season in Taranaki with drought in the south of the province and poor returns - particularly for our sheep and beef farmers.

“At a time farmers are struggling the banks are still recording record profits, and that doesn’t sit well with me.”

Gibbs says farmers want to know their local MPs understand the pressures they’re under and that they’re doing something to

help.

“We’ve got a lot of older farms locally and their owners are being asked to upgrade things like effluent systems for environmental compliance,” Gibbs says.

“How are they supposed to do that if they can’t get access for affordable capital?”

“We’ve also got a lot of young farmers who are just starting out contract milking or share farming that are having similar challenges.”

The Federated Farmers’ May 2024 Banking Survey showed the number of

farmers satisfied with their banking relationship has nose-dived from 80% five years ago to just 51% today.

The survey also found that a record high number of farmers feel they have come under undue pressure from their banks.

Only one in five farmers feel they have been adequately supported by their banks during this time of high interest rates.

“There are clearly some widespread and systematic challenges in our rural

banking system and we need the Government to take a much closer look at what’s going on,” Gibbs says

“There’s been talk of an independent inquiry for almost a year now, but it’s time for the politicians to stop talking and start delivering.

**JUST TYRES**  
DIRECT TYRE IMPORTERS  
NEW TYRES - NEAR NEW TYRES - PUNCTURE REPAIRS - FITTING & BALANCING - 4x4 - LIGHT TRUCK & CART TYRES  
**SILAGE TYRES**  
**FREE DELIVERY**  
(Conditions apply)  
20 Smart Rd, NP | 06 769 5344  
36 Glover Rd, Hawera | 06 278 3053  
justtyres@xtra.co.nz

# Another record for Oeo jersey breeders



Record price yearling Glanton FC Bane. Sold for \$16,900.

Oeo jersey cattle breeders Rob and Alison Thwaites have just broken their own record which has held for the last five years.

At the New Zealand Jersey Pride Sale their yearling Glanton FC Bane sold for \$16,900, a record price for a Jersey yearling. She sold to

Shane O’Shea of Northland with a condition of sale being that the yearling had to move into the LIC Generate Programme for Embryo Work.

The previous record was set in 2019, when another of the Thwaites’s yearlings sold for \$14,200.

The Thwaites’ recently sold their Glanton Jersey stud.

Their herd has been one of New Zealand’s leading herds genetically for a “number of years” says Rob. In the last 10 years 30 of their bulls have been in the LIC sire proving scheme.

The herd was sold privately. The three youngest groups were sold to Matthew and Emma Darke of the Rockland Jersey Stud who milk 1200 cows once a day at Piopio. The three-year-old and older were sold to the Cartwright family of Inglewood, breeders of CRV bull Tawa Grove Maunga.

The Thwaites’ also hold the record for a price for an in-calf Jersey heifer, sold in 2021 to Tony Barlowe and Tina Hardcastle for \$23,600 with the proceeds of that sale going to charity.

Rob says all their recent high price cattle are descended from Glanton Mans Blanche who was born in 2005 and two years ago was one of the inaugural inductees into the Jersey Hall of Fame.

**NZ FARMERS LIVESTOCK**  
  
For all your  
Livestock requirements  
Servicing the Coast  
  
Contact  
*Bryan Goodin - 027 531 8511*  
*Sheldon Keech - 027 222 7920*

**FARM ENVIRONMENTAL ADMIN SERVICES**  
  
Lynelle Kuriger  
027 3378899  
  
FULL NUTRIENT MANAGEMENT  
COMPLIANCE SERVICES

**FIELDAYS SPECIALS IN STORE**  
**GET MASSIVE SAVINGS ON A HUGE RANGE OF STIHL TOOLS**  
16 May - 17 June 2024  
T&C's apply

**WE PICK UP AND DELIVER TARANAKI WIDE**  
**STIHL SHOP HAWERA**  
25 Glover Road, Hawera  
Ph: 06 278 4753 Fax: 06 278 5682  
Email: hawera@stihlshop.co.nz

**SHOP**  
Outdoor Power Equipment  
www.stihlshop.co.nz

**TransAg Centre Ltd.**  
AGRICULTURE  
... and proud of it

**STRONGER THAN EVER**

**VISIT US AT FIELDAYS SITE D99**  
**SPECIAL PRICING AVAILABLE**

**NEW PLYMOUTH**  
65 KATERE ROAD  
PARTS/SERVICE: 06 758 2274  
SALES: PAUL STANTON 027 498 7277

**HAWERA**  
16 GLOVER ROAD  
PARTS/SERVICE: 06 278 5119  
SALES: RAYMOND 027 444 8861



# Success for Opunake Surf Lifesaving Club

Over the past weekend the Opunake Surf Lifesaving club saw a significant amount of excellence at the Central Region Taranaki Surf Lifesaving awards of excellence. The achievements of the amazing athletes, coaches, volunteers, and passionate people of our small country club were recognised with results we can be proud of. Here are the following award winners and finalists.

Taranaki Surf Life Saving awards, we thank you for your effort and support to provide a great beach, super beach education and dedicated lifeguards #thebestlittleclub

National Achievements  
Jerram Sinclair: NZ High Performance Squad – Youth.  
Jordan Grylls: NZ High Performance Squad – Senior.  
Bella Pivac, Ella Griggs: NZ High Performance Squad – IRBS. SAND Nationals 18th. IRB Nationals 5th.

Taranaki Junior Champs - (Champ carnival). 1st U-9 Female: Isla Brown. 1st U-12 Male: Johnny Elsmore.

Taranaki Junior Champions - (all local carnivals). 1st -12 Male: Johnny Elsmore. 2nd U-12 Male: Roy Gibson. 3rd U-12 Male: Tyree Young. 3rd U-12 Female: Harpa Olliver. 2nd U-14 Male: Victor Gibson.

Taranaki Senior Champions. 3rd U-19 Male: Jerram Sinclair. 3rd Open Male: Caleb Lawn. 2nd Open Female: Jordan Grylls. IRB Taranaki Champs. 1st U-19 Female: Macy Sinclair, Caro Olliver, Melah Sinclair. 1st U-19 Male: Charlie Rankin, Alex Bengston,



The Opunake Surf Lifesaving Club had a lot to celebrate.

Mahlee Campbell. 2nd U-19 Male: Liam Drought, Joe Edwards, Kate Midgley. 3rd U-19 Male: Harrison Martins, Ethan Jensen, Crystal Jordan. 1st U-23 Female: Bella Pivac, Ella Griggs, Crystal Jordan. 1st U23 Male: Jacob Whittle, Jack Feaver, Melah Sinclair. 2nd U-23 Male: Caleb Lawn, Sam Drought, Kate Midgley.

Finalists. Official of the Year: Claire Hunn. Opunake Female Beach Relay Team: Riley, Jordan, Caro and Bella. Sportsperson of the Year: Caleb Lawn. Junior Sport Contribution: Claire Hunn. Search and Rescue Contribution: Michael DeBique. U-19 Lifeguard of the Year: Melah Sinclair.

Lifeguard of the Year: Sam Drought.

Coach of the Year: Trent Olliver.

Winners. Innovation Award: Club systems/whiteboards for lifeguard/juniors (Claire/Speed). Taranaki Local Rescue of the Season (after hours, most lifeguards) 24/1/24. Powercraft Contribution of

the Year: Liam Drought.

Instructor/Examiner of the Year: Michael DeBique. Michael Taylor Award - John Elsmore

Regional Service Awards - Massive Congrats and thanks to Michael DeBique, Aimee Leigh

Taranaki Club of the Year 2024.

To receive the top

Taranaki club of the year for the third time in four years is something words cannot explain. To the kids, lifeguards, members, parents, grandparents, sponsors, life members, your contribution to making this club what it is certainly got us to where we are today.

Following the awards training hasn't stopped,

with 10 of our members heading over to the world championships on the Gold Coast held from September 2-10 so be sure to keep your eyes peeled at the Opo crew hit Aus.

See you all next summer.

Opunake Surf Lifesaving Club.

## What makes a good farmer in Aotearoa?

Farmers and non-farmers in New Zealand generally agree on what makes a 'good farmer,' according to new research.

For both groups, the broad definition covers animal

welfare, biodiversity, environmentally friendly farming practices, and connections to the land. While there were some differences in the details, the authors say that knowing

how farmers' core values align with those of the general public could pave the way for more transparent discussions about farming in Aotearoa.

Interestingly, farmers

were trusted as a source of information more than mainstream media by both groups.

Journal of the Royal Society of New Zealand



**Servicing the lower North Island with a Fleet of Silo / Auger trucks.**

**Top Fill - Bottom Fill - Blower Trucks**

For a competitive quote phone

**0800 707 404 – option 1**

**SANDFORDS**

**RURAL CARRIERS**



# Ronald Hugh Morrieson judges announced for 2024

The judges for the Lysaght Watt Trust Ronald Hugh Morrieson Literary Awards 2024 have been announced.

Taranaki-based writer David Hill is the Short Story judge. David is a prolific and highly regarded New Zealand writer, playwright, poet, columnist, and critic. Best known for his highly popular and award-winning body of work for young people, ranging from picture books to teenage fiction, his novels have been published all around the

world and translated into several languages. His short stories and plays for young people have been broadcast here and overseas.

Tracey Slaughter is the Poetry judge for this year's competition. Tracey is a poet, fiction writer and essayist. Her work has received numerous awards including the Manchester Poetry Prize 2023, the Fish Short Story Prize 2020 and the Bridport Prize 2014. She teaches at the University of Waikato, where she edits the journals Mayhem and

Poetry Aotearoa. Her recent books are Devil's Trumpets (2021) and Conventional Weapons (2019) and her latest collection The girls in the red house are singing comes out later this year. She is currently working on a collection of personal essays and collaborating with Liam Hinton on a screenplay adaption of her novella The Longest Drink in Town.

The judges will be joined by Taranaki Daily News editor Matt Rilkoff who will be judging the

research section.

"We are very excited to welcome these three prestigious judges to South Taranaki's premier literary competition this year," says South Taranaki District Council Community Outreach Librarian Katherine Bosworth.

The competition opens on Thursday 13 June with the kick-off of the secondary school workshops. As always, open writing and poetry workshops taken by the judges are available to the public for free and

will be held at Te W'anake | The Foundry in Hāwera. The Open Short Story workshop with David Hill is on 15 June, and the • Open Poetry workshop with Tracey Slaughter is on 22 June

"Usually, these workshops are held on the same weekend, but due to the commitments of the judges, we've had to spread them over two dates this year," says Katherine

"We hope that this means that more people can come and soak up the knowledge these two can provide."

# NPDC bringing you new lights and exciting entertainment to light up your winter



A light installation 'Octopoda' estined for New Plymouth years ago before being stuck in transit is among nine installations making their way to Taranaki for NPDC's TSB Winter Festival of Lights Pop Up this month.

Now in its third year the festival is set to light up winter over the Mataraki long weekend, June 27-30, across several locations from Huatoki Plaza to the Coastal Walkway in New Plymouth's city centre.

NPDC Events Lead Lisa Ekdahl says 'Octopoda' is just one of the many surprises in store for festival fans this year.

"The TSB Festival of Lights Winter Pop-Up has fast become a favourite on the local events calendar and the team has been working hard to pull together some stellar entertainment. All nine light installations have not been seen before in New Plymouth.

Ariki Street will be closed while the festival is while Centre City is offering free parking for up to two hours between 5pm – 10.30pm each night.

For more information and the full line-up, visit [festivaloflights.nz](https://festivaloflights.nz).

**Left: Octopoda will be on display at this month's Winter Festival of Lights Pop Up event.**

**TSB**

**Festival of Lights**

NPDC

**TARANAKI**  
like no other



# LIGHT UP THEIR WINTER

## FREE Winter Pop-Up!

### 27-30 June

Lighting and entertainment for the whole whānau  
From Huatoki Plaza to Coastal Walkway

[festivaloflights.nz](https://festivaloflights.nz)





## CHEESE BAR ELTHAM



Crazy cheese deals with a great selection of –

• Brie & Camembert • Haloumi, Havarti and Goudas  
• Blues • Cheddars, Cheddar offcuts and more!

Find us down the ONE-WAY street at **1 Bridge St, Eltham**  
We are open **Mon - Fri 9am to 4pm**

### CHURCH NOTICES



Church Services - *Manaia, Kaponga, Opunake, Pungarehu, Okata, Oakura*

#### Opunake Co-operating Parish

Havelock Street, Opunake - St Pauls - 9.30am every Sunday  
Rahotu - Wesley - 11am first Sunday of the month

#### Okato Co-operating Parish

Okato – St. Paul’s – Sunday Service every 1st and 3rd  
Sundays of each month, 10.00am  
Oakura – St. James – Sunday Service every 2nd and 4th  
Sundays of each month, 10.00am  
Mid-week open church – Okato – St. Paul’s –  
Pew for You, every 3rd Wednesday of each month,  
4.30pm-6.00pm

#### Opunake Catholic Church

St Martins, Pungarehu: Temporarily closed - no Masses  
Our Lady Star of the Sea, Opunake: 10am every Sunday

#### Other areas

Sacred Heart, Manaia - Temporarily closed - No Masses  
St Joseph's, Hawera - Every Sat at 5pm; Every Sun at 9am  
St Patrick's, Patea - 4th Sunday of month; 11.00am  
St Francis de Sales, Waverley - 2nd Sunday of month;  
11.00am

#### St Patricks Catholic Church, Kaponga

2nd, 4th and 5th Saturdays of the month Mass at 6pm.  
However during winter the time will be 5pm i.e. Saturday  
10th June, 24th June and 8th July. After this date the time  
will revert back to 6pm.  
1st and 3rd Sundays of the month Liturgy of the Word with  
Communion at 8.45am.  
Thursday Mass 9.30am (subject to change).

#### St Patricks Catholic Church, Okato

Saturday Vigil 6.00pm - weekly

#### The Wave

Pentecostal Church 64 Domett St, Opunake  
Sunday Services 10.30am  
Women's Group 10am Tuesday  
Men's Group 7pm Wednesday  
Come along or contact  
Belinda Philp  
027 935 6191

#### St. Barnabas Anglican Church

141 Tasman St, Opunake  
Sunday Services 10am  
Communion 2nd, 3rd & 4th Sunday  
Prayer & Praise 1st Sunday  
Every 5th Sunday all 4 churches gather for  
a Combined Service

#### Okato Community Church

Meets 10.30am Sunday at Hempton Hall.  
Everyone welcome

#### St John's Community Church. Kaponga

Cnr West and Egmont Streets.  
Sunday Services 10.30am followed by morning tea

#### Manaia Union Fellowship

Terou St. Manaia.

Meet 10am every 3rd Sunday of the month with communion

#### Friend & Fellowship Group

Thursdays @ Manaia

Support our Faith and support each other with Prayer  
and Bible study  
Encouraging interactive discussion and Praise  
All are welcome  
We would love it if you could come  
Rodney & Val 274 8550 or 0272384187

#### St. Andrew's Presbyterian Church

90 Regan St., Stratford,  
9:00am Sunday: Breakfast and Study  
10:30am: Breakfast is followed by "Coming Together  
Worship Service"  
Thursday: Study Group at 2 pm at 96b Brecon Rd.,  
Stratford.  
Contact Rev. John Mattock 027 2039799

## The Trust Fall: Julian Assange Documentary

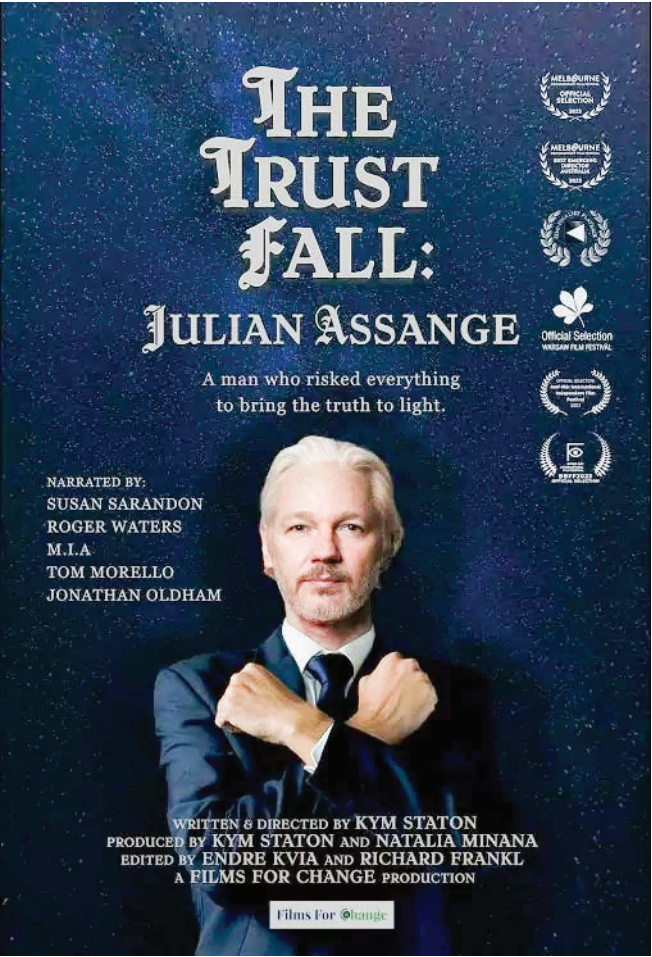
A powerful new Australian documentary film, The Trust Fall: Julian Assange will have its Opunake premiere on June 23-27 at Everybody's Theatre.

The Trust Fall reveals the meaning and significance of the continued detainment and persecution of the most famous political prisoner of our times - Julian Assange. The film is having a stellar theatrical run in Australia, New Zealand and the UK, and is the most watched Australian documentary in cinemas so far in 2024.

The documentary tells the story of Julian Assange - the most famous political prisoner and internationally-awarded journalist of our time – who exposed US war crimes and government corruption on his whistleblower WikiLeaks website.

Charged under the antiquated 1917 United States Espionage Act with the threat of a 175-year prison sentence, Julian is currently awaiting a new appeal to begin in the UK High Court to avoid extradition to the United States.

Filmed over 2.5 years on three continents and in ten cities, The Trust Fall: Julian Assange features high-profile Assange supporters and global experts; Pentagon



Papers whistleblower Daniel Ellsberg, activists John Pilger and Tariq Ali, journalists Mary Kostakidis, Chris Hedges, Dean Yates and Stefania Maurizi, Assange lawyer Jennifer Robinson, government leaders Jill Stein, Sen. Peter Whish-Wilson and Sen. David Shoebridge

and former UN Special Rapporteur on Torture Nils Melzer among others. It also includes heart wrenching conversations with Julian's family; Stella Assange, John Shipton and Gabriel Shipton.

The Trust Fall is narrated by Susan Sarandon, Pink Floyd's Roger Waters, rapper M.I.A and Rage

Against The Machine's guitarist Tom Morello.

The film is the directorial debut of Australian filmmaker Kym Staton - founder and director of Films For Change.

"This is a film about a man who risked everything to bring the truth to light," says Kym. "In 2010, I witnessed the 'Collateral Murder' video on the nightly news. At the time I didn't make sense of it. I had no idea of the significance of this footage, and who Julian Assange and WikiLeaks are.

Already, The Trust Fall has won several awards including Best Emerging Director at Melbourne Documentary Film Festival, Best First-Time Director at the Cine Paris Film Festival and official selection at Warsaw Film Festival.

Julian has now been detained without conviction for 14 years, including under asylum in London's Ecuadorian Embassy (six years) and then forcibly-removed to the high-security HM Belmarsh Prison (five years).

The worldwide distributor of the film is Journeyman Pictures in London.

"If wars can be started by lies, peace can be started by truth"

- Julian Assange



# Protect against measles

Have you had your 2 **FREE** shots?

[www.immunise.health.nz/measles](http://www.immunise.health.nz/measles)

Health New Zealand  
Te Whatu Ora

## Measles – have you had your two free shots?

Have you had your two free shots of measles protection? Aotearoa New Zealand is still at high risk of a measles outbreak. There's a risk of getting measles if you have not had two vaccinations or have not already had measles.

It's important to protect you and your family/whānau by getting immunised. The measles (MMR) vaccine is free for all children in New Zealand and all adults over the age of 18 who are eligible for free New Zealand healthcare.

If you aren't sure whether you have had one or two doses of MMR, for most people it's safe to get immunised again – just reach out to your GP, nurse or Māori health provider, or visit your local pharmacy.

To find out if you need a measles vaccine please visit [www.info.health.nz](http://www.info.health.nz)



MIND MATTERS

*You may well know a family that has recently “broken up”. Everyone is concerned about the children, and it is an unhappy time for all. The impact is on neighbours, friends, grandparents and other relations – everyone.*

*Child care facilities and schools may feel the impact. It is not uncommon for half the children in a school class to have parents who have separated. (Incidentally, children can gain much support at school from their friends who are in similar circumstances to themselves.)*

*Schools are now agencies which provide family support, counsellors, nurses and social workers. They also teach. Over the last thirty years, the role of schools has steadily increased. You may remember when the only social or medical service a school provided was the dental clinic.*

*It is a rather obvious truth that children will not learn if they are hungry. Why people in Wellington struggle with this concept is beyond me, but it appears to have much to do with egos and point scoring.*

*For almost a decade, I have worked as a family mediator for parents in conflict over their children. Today’s MIND MATTERS considers some of the things to think about when parents separate and divorce. In a further MIND MATTERS, I will consider the practical side of separations which involve children.*

In Aotearoa, separation and divorce are managed through the legal system. When people separate, they deal with lawyers, the Department of Justice and the courts. In other countries, they would deal with doctors, psychologists, and social workers. These



DR. ROBERT SHAW

countries consider marital difficulties to be a mental health matter.

Separation is a particularly painful kind of stress. Being attached to another person is a very natural and human way to live. Attachment has deep roots in our evolutionary origins. The breaking of an attachment bond when it is forced upon someone is going to be tough.

When couples separate, breaking the bond between them is only one of several difficulties which individuals face. Their separation is public and potentially humiliating. Shame at failing in a relationship, can make people withdraw from involvement with family and friends. Thus, just when they most need people, they avoid people.

Embarrassment or shame make a person inclined to blame their former partner for the alleged problems. They need a story they can tell themselves, as well as something to say to others, which will lessen their culpability and thus their guilt.

At the same time that the separating partner faces mental health challenges, they might also face housing and financial problems. Problems at work are common, and these are made no easier by the need to take time off work. In

my experience, employers in Taranaki are usually kind and practical. Any one of these problems, alone, is enough to create a debilitating mental state (anxiety and depression primarily).

In a difficult breakup, competent adults who have good mental health show their vulnerability. When younger people are involved, even those who are strong mentally can be quickly brought down. Some people, to ease their pain and pretend all is well, want to find a replacement partner as quickly as possible, and hence they bounce from one poor relationship to another.

Typically, when under extreme stress, people revert to an earlier stage of their development. Thus, they might act like troubled children or rebellious adolescents. There might be childlike tantrums. Tit-for-tat – payback. They have little patience. They may believe they are the one who compromised and become determined not to compromise again. Thus, they are beyond reason.

To this dismal description of separation, add children into the mix. As we know, parents need to make complex, critical decisions about their children at the worst possible time. Parents may disagree on things such as when each parent will be responsible for the child, who pays for what, which school, and how will the changeovers between parents occur. There can be the challenges of overseas holidays, the attitudes of grandparents, and how to cope when a parent has been absent for a long time.

Unfortunately, low levels of family violence are all too frequently involved in separations. Emotions are high, tempers fly, and things

are said which children hear and everyone regrets.

The importance of protecting children from all forms of violence is underscored by medical research. We now know that our brains have a remarkable ability to change and develop. Change takes place throughout life and begins during pregnancy. If a mother is involved in violence, her body releases stress hormones. These hormones cross the placenta and impact on the foetus. What a baby sees, feels, hears and touches, shapes the way the baby’s brain develops. The period up to the age of three is the most critical time, but older children and adults suffer from violence the same way.

The way the child’s brain develops affects the way the child thinks, feels, and acts for the rest of their life. Children’s brains suffer if the child experiences yelling, fighting, pushing or the smashing of objects. Damage is particularly severe if the child is attached to the person involved, the mother or the father. However, any violence by anyone is serious. Patterns are established in the brain which make it more likely that the child will subsequently have learning difficulties, struggle to manage their emotions, enter abusive relationships and become addicted to drugs or alcohol. Problems such as these can have life-long consequences.

Some children appear more resilient than others (it may be that they simply do not feel confident speaking up – silence does not mean all is well). Many people only

seek help for their childhood trauma when they are adults. They may have PTSD, “Post Traumatic Stress Disorder,” which fortunately is often amenable to treatment.

We all know that children need to feel safe and to trust an adult at all times. They need to know where to go for cuddles, and where they can play in a supportive environment. After a separation, the child needs these supports in two households. The greatest challenge for each parent is not to undermine the efforts of the other as the other seeks to build their supportive environment.

When dad says she is a terrible mother, I sometimes remind him that she is the mother he chose for his children. When mum says he does not know how to be a parent, I sometimes remind her that he is the only dad they have, the children love him, and she chose him for them.

Fortunately, the evidence seems to support the view

that children can cope quite well living in two houses, even when their rules and standards are quite different. They do not cope well with a parent bad-mouthing the other.

Dr Robert Shaw  
Registered Psychotherapist  
opunake@mail.com

This month in history: Mount Tarawera erupts

On June 10, 1886 Mount Tarawera (24km from Rotorua) erupted between midnight and 6am. Mud, ash, and lava was thrown over a wide area including the famous Pink and White Terraces which were obliterated. The village near the mountain was especially affected; many people lost their lives with the toll between 100 and 120.

POP-UP CLINICS

Tui Ora Heartlands Hub  
21 Napier Street, Ōpunake

Thursday 20 June  
11.30am – 3.30pm

- Childhood immunisations
- COVID-19 boosters
- Measles (MMR) vaccine
- HPV vaccine
- Cervical screenings (self tests)

Protect yourself and your whānau this winter and stay happy and healthy by getting immunised – just walk in!

TUI ORA

EVERYBODY'S THEATRE  
ŌPUNAKE

72 Tasman Street, Opunake | www.everybodystheatre.co.nz

<b>Furiosa: A Mad Max Saga</b> 2hr 28mins   R16 Thu 13 Jun 7PM	<b>Bad Boys: Ride or Die</b> 1hr 55mins   R13 Fri 14 Jun 7PM   Sat 22 Jun 7PM
<b>IF</b> 1hr 44mins   PG Sat 15 Jun 1PM	<b>The Watchers</b> 1hr 42mins   M Sat 15 Jun 7PM   Sun 23 Jun 7PM
<b>Joika</b> 1hr 51mins   M Sun 16 Jun 1PM	<b>Unsung Hero</b> 1hr 53mins   PG Sun 16 Jun 7PM   Thu 20 Jun 7PM
<b>Despicable Me 4</b> 1hr 34mins   PG Fri 21 Jun 7PM   Sat 22 Jun 1PM	<b>The Trust Fall: Julian Assange</b> 2hr 8mins   E Sun 23 Jun 1PM   Thu 27 Jun 7PM

**Furiosa: A Mad Max Saga**  
Violence, cruelty & content that may disturb | 2hr 28mins | Rated: R16  
Thu 13 Jun 7PM

**Bad Boys: Ride or Die**  
Violence, sexual references & offensive language | 1hr 55mins | Rated: R13  
Fri 14 Jun 7PM

Some of the regular services:

TAYLOR DENTAL PRACTICE  
Every Tuesday, Thursday and 2nd Friday

LISA KEEN AUDIOLOGY  
Every Wednesday

ACTIVE + PHYSIOTHERAPY  
Monday & Thursday 9am - 3.30pm

NZ POST, NZTA & STATIONERY SHOP  
Monday to Friday, 8.30am to 5pm

COASTAL PRINTERS  
Monday to Friday, 8.30am to 5pm

TARANAKI CHIROPRACTIC  
Every Wednesday

COUNSELLORS  
Gwenyth Richards 06 278 6399  
Alex Jones 021 0816 3248  
Robert Shaw 022 020 9779

MATTHEWS OPTOMETRISTS  
1st Thursday of the month

TARANAKI PODIATRY  
2nd Wednesday of the month

HIP  
Every Monday and Tuesday

LY BEAUTY  
Every Tuesday  
Ph for an appt: 027 910 7111

DID YOU KNOW?  
CoastalCare offers for hire private, well-appointed room's for meetings, training opportunities and social gatherings.

**LISA KEEN**  
audiology  
Proudly 100% kiwi owned and operated

**Help the people of the Cook Islands hear every time**

Donations needed

Hearing Aids Batteries Hearing Aid Accessories

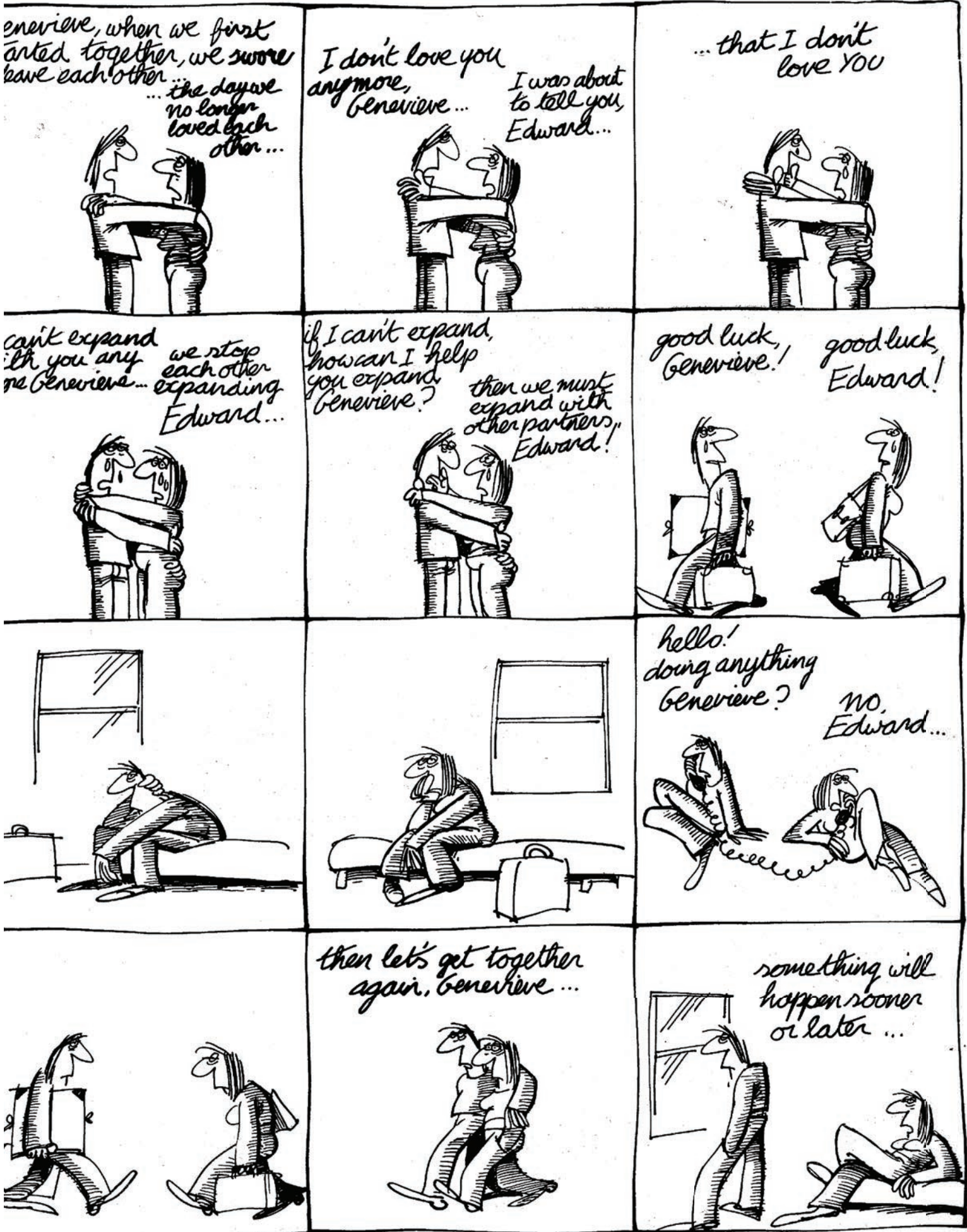
I am off to the Cook Islands at the end of June to provide audiology services to people on Rarotonga and the outer islands. If you or someone you know has any old hearing aids or hearing aid batteries that they no longer need, please consider donating them. These can be dropped at CoastalCare for collection. Thank you for your help! Lisa Keen

Find us on Facebook  
or visit us at [www.coastalcare.co.nz](http://www.coastalcare.co.nz)  
CONTACT ARETHA LEMON  
Facility Manager on 06 761 8488

**CoastalCare**  
Health and Community Centre  
Haumaru ki Tai  
Haumaru ki runga, Haumaru ki raro



enthusiasm



## What's On Listings

- ONGOING**  
**Movies at Everybodys Theatre in Opunake:** Playing several days and nights each week. Refer timetable in newspaper.  
**MONDAYS:** The Barnabas Centre - St Barnabas Church Hall, 141 Tasman Street Opunake: Each Monday 10 am - 12:30 pm. Information call Jenny 7618080 or Glenys 6558025  
**TUESDAYS**  
**Opunake Walking Group:** Every Tuesday 10am. Meet outside Club Hotel on Havelock St. Phone Margaret 027 477 5600 for more info if needed, or just turn up.  
**Pungarehu Golf Club Twilight:** Tee-off between 4.30 & 6.30pm.  
**Opunake District RSA:** Meet 1st Tuesday of every month at 5.30pm at the Opunake Fire Station. Financial Members are welcome to attend.  
**WEDNESDAYS**  
**Coastal Young Farmers:** Meet 2nd Wednesday of every month at 7pm at Butlers Reef Bar & Cafe, Oakura.  
**Lisa Keen Audiology at Coastal Care, Opunake:** Wednesdays 9am - 5pm, for an appointment call 027 591 4222 - 0800 555 676  
**Okato & District Historical Society open every Wednesday:** At the Okato Community Trust Hall, 47 Cumming St, Okato. phone Meg on 06 752 4566.  
**Opunake Embroiders Guild:** Meet 2nd and 4th Wednesdays of the month, 10.30am-3pm at the Opunake Business Centre, Napier St, Opunake. Just come along or phone Sheryl 06 761 8769.  
**Okato Market:** In Hempton Hall, Okato 4pm to 5.30pm.  
**Free singing experience with Taranaki Harmony Chorus:** Meet every Wednesday at Inglewood Mamaku Centre, 7-9.30 pm Phone Helen 021 296 0700.  
**THURSDAYS**  
**Egmont Euchre Club:** Every Thursday 1pm at the Opunake Bowling Club. Inquiries, 06 761 8337 or 06 761 8607.  
**Taranaki Country Music Hall of Fame, Manaia:** Running every Thursday night from 7.30pm, 11 Surf Highway, South Road, Manaia. Contact Helen Braithwaite 0274 825 108.  
**FRIDAYS**  
**Eltham Business Association Friday Markets:** 9:30am to 1pm, Carpark of Touch Point, High Street, Eltham.  
**Singer Songwriters, New Plymouth:** Last Friday of the month at Little Theatre, 29 Aubrey St, NP from 7-11pm.

Taranaki's Main St.

Winter hours:  
6.00am-8.30pm

Opunake

Hawera

RAHOTU

Pungarehu

OAKURA NP

QUICK AND EASY!

LPG Swappa bottles now available.

We also do WOFs

HEYDON PRIEST LTD

OAKURA

Route 45 - Taranaki's Main Street  
Oakura | Ph: 06 752 7753

- AT THE CLUB HOTEL THIS WEEK:**  
**Monday:** Burger special \$15, Happy Hours 3pm- 6pm; **Tuesday:** Pork ribs \$20, Pool Tournament 7pm; **Wednesday:** Pizza night 2 for \$24, Poker night \$30 buy in; **Thursday:** Steak night for \$20, Poker Night \$27 buy in; **Friday:** Pensioners lunch \$15, Lamb Shank \$20; **Saturday:** Chicken Schnitzel \$20; **Sunday:** Roast night \$20 Complimentary dessert for dine in customers.  
**NOW TO OCTOBER 13**  
**Te Kitenga o Hina Exhibition:** Puke Ariki Museum, New Plymouth  
**NOW TO JUNE 22**  
**Langkah (Steps) - A solo exhibition by Krismarlianti:** At Lysaght Watt Gallery, Hawera.  
**JUNE 5 TO 29**  
**Land & Sea Exhibition by Jennie Purdon & Frank Eustace:** At the Village Gallery, Eltham.  
**JUNE 22**  
**Opunake Bowling Club AGM & Prizegiving:** At the Bowling Club, 10am  
**WITT Open Day:** At the WITT Campus, New Plymouth. 11am-2pm.  
**JUNE 17**  
**Grey Power South Taranaki General Meeting:** Senior Citizens Hall, Hawera. 10am.  
**JUNE 19**  
**Mid Winter Market:** Hempton Hall, Okato. 4-7pm.  
**JUNE 23**  
**135th Celebration. St Andrew Presbyterian Church:** 10am.  
**JUNE 27-30**  
**TSB Festival of Lights Pop-Up:** New Plymouth.  
**JULY 8**  
**Opunake & District Business Association AGM:** Opunake Business Centre, 6pm.



SITUATIONS VACANT

OPUNAKE & COASTAL

NEWS

KEEP FIT & GET PAID FOR IT!

Delivery people needed for half of Opunake township.

Suitable for any age.



Take some time out from your screens and enjoy good rates (15c per paper).

Ph 06 761 7016 or call at our Napier Street office.

The next issue of the Opunake & Coastal News is due out on Thursday June 27. Phone us on 06 761 7016 to be in it.

BOARD AVAILABLE

BOARDER WANTED.

Fully self contained room. \$180/week. Power and wifi included. References required. Contact Murray, 027 688 7378.

WANTED TO BUY

Stevenson Calf Rearing

MILK & COLOSTRUM WANTED

Picking up 24/7

Our tanker handles large volumes

Ph. Mark or Trish on 0800 350 340 or txt 027 495 2897 E: markstevo@xtra.co.nz

Troy Stevenson 027 469 7636

E: troystevo@gmail.com

KANE BARRETT

LIVESTOCK

CALF MILK WANTED

Any volumes - 24/7

027 4036469 | kanebarrettlivestock@outlook.com

RENTALS

RENTAL WANTED.

Semi retired professional couple require standalone property with garage, unfurnished. One environmentally friendly cat. Ex property manager so your house will be well maintained and cared for. Contact Ranui Hohaia, 027 2299 312. ranui.hohaia@gmail.com.

SCRAP METAL - for all scrap metal Taranaki wide, give us a call. Molten Metals (06) 751 5367. www.moltenmetals.co.nz

GRAZING

GRAZING AVAILABLE

May to May for Dairy Heifers. Phone Richard 027 510 9667.

TRADES & SERVICES



EtherNetworks

Information Communication Technology

RURAL DATA SOLUTIONS

Telecommunications | Computer Networks

Surveillance Cameras | Broadband Connectivity

Starlink Installations | Cellular Coverage

TARANAKI WIDE SERVICE & SUPPORT - 06 769 5734

Email - office@ethernetnetworks.co.nz

CARPETS second hand, large selection After Disaster Ltd 223 Devon St West, NP. Phone (06) 769 9265

CIRCULATION PROBLEMS. Cold hands, cold feet, Try Kyolic Circulation formula with Cay & Vitamin E. Helps with poor circulation. At The Health Shop, Centre City. Ph 06 758 7553.

HAWERA BUDGET Advisory Service. Wed 9am to 12pm. Coastal Care, Opunake by appointment. Starting Feb 8th 2023 and fortnightly thereafter. Contact us by phone: 0800 333 048 (free from mobile). Facebook page: Hawera Budget Advisory Service. Email: info@hawerabudget.co.nz

BOWEN TECHNIQUE. At The Health Shop, Centre City. Ph 06 758 7553.

OLBAS OIL available at the Health Shop. Cleans blocked sinuses. Also available as lozenges and as an inhaler. At The Health Shop, Centre City. Ph 06 758 7553.

BUILDER. Hay Barns, Garages, Sheds, Roofs, Gutters, Bathrooms. All building maintenance. Local builder. Dion 021 027 06657.



PUBLIC NOTICES



Opunake-Rahotu Veterinary Trust

PO Box 117, Opunake - Phone: 021 729 471 - Email: ORVTrust@gmail.com

Applications are now open for tertiary students to apply to the

Opunake Rahotu Veterinary Trust

for financial assistance.

To qualify for this grant you must be currently studying or in an apprenticeship and have a relationship to the taranaki Coastal Farming Community (Okato-Kaponga-Oeo)

Applications close 31st July 2024.

Request a form by emailing ORVTrust@gmail.com

The forms can then be emailed back or delivered to Coastal Care, Opunake

135<sup>TH</sup> CELEBRATION

St Andrew Presbyterian Church


June 23, 2024

10am Service (No 9am service on the day)

followed by lunch

Bookings essential - limited spaces

Contact John Mattock on 027 203 9799



OPUNAKE & DISTRICT

BUSINESS ASSOCIATION

AGM

Monday July 8 2024, 6pm

Hughsons & Associates Boardroom at the Opunake Business Centre, 23 Napier St, Opunake (opposite the Coastal Care Medical Centre)

ODBA providing pizza and drinks.

Opunake Bowling Club Inc

AGM & Prizegiving

Saturday 22 June 2024 at the Bowling Club

Commencing at 10am

Members are asked to bring a plate

C. Commane President

To advertise, call us on 06 761 7016



Grey Power

NEW ZEALAND FEDERATION INCORPORATED



GREY POWER

SOUTH TARANAKI

General Meeting

17th June, 10am

Senior Citizens Hall

81 Victoria St Hawera

Guest Speakers: On -line scams

All welcome

SINGING LESSONS by professional singer. Contact Mike 027 932 1947.

MID-WINTER MARKET

Wednesday 19th June 4 - 7pm

Hempton Hall, Okato

Veges, Baking, Avo's, Sox, Chocolates, Candles, Crafts, Pottery, Donuts & more

This newspaper is subject to NZ Press Council procedures. A complaint must first be directed in writing within one month of publication to the Opunake & Coastal News email address. If not satisfied with the response, the complaint may be referred to the Press Council, PO Box 10879, The Terrace, Wellington 6143. Or use the online complaint form at www.presscouncil.org.nz. Please include copies of the article and all correspondence with the publication.

TO LET



HUGHSON & ASSOCIATES

Accounting for the future, today

23 Napier Street, Opunake

Office Rooms/ Board Room available

Long term, short term or casual basis

Building has kitchen facilities, wheelchair access, cleaning services and plenty of parking on Napier Street or at rear of building on King Street.

Inquiries to Clare Moss - Ph 06 278 4169

clare.moss@hughson.co.nz

The Opunake & Coastal News is distributed free to every home and business within the rural area, bounded in the north by the New Plymouth City border, extending east to Egmont Village and around to the edge of Stratford, south to the border of Hawera township and inland to Kaponga and through Eltham.





meritcars

with distinction

VISIT WEBSITE MERITCARS.CO.NZ

493 DEVON STREET EAST, STRANDON, NEW PLYMOUTH

CALL US TODAY 06 281 1925

ALL ON ROAD COSTS INCLUDED PLUS TANK OF FUEL. ONE STOP SHOP FOR FINANCE, WARRANTIES & FREE SMILES

2016 ISUZU D-Max LS DC

HI-SPEC, WORK READY

Nudge bar, Tow Bar, Hard Cover, 2999cc, Diesel, 5pd Auto. 144kms



ONLY \$24,995

2017 Ford Fiesta SPORT

Low Km's NZ New Hatch

Factory Body Kit, ECOBOOST, Turbo, Stability Control, 999cc, Petrol, Auto, 68kms



\$16,995

2016 Ford KUGA AMBIENTE

GREAT BUY NZ NEW SW

Keyless Start, Tow Bar, Turbo, Cruise Control, ECOBOOST, NZ Navigation, 1498cc, Petrol, Auto, 103kms



\$16,995

2016 BMW 118I

LOW KMS, M SPORT HATCH

Collision Avoidance, Front & rear Parking Sensors, Turbo, Sports Mode, Keyless Start, 1498cc, Petrol, Auto, 62kms



WAS \$19,995  
NOW \$17,995

2015 HYUNDAI Santa Fe

STUNNING, \$1000's SPENT ON UPGRADES

7 Seater, Station Wagon, AWD, Tinted Windows, Heated Leather Seats, Alloy Wheels, Auto Headlights, 2359cc, petrol, Auto, 90kms



\$25,995

THIS WEEK'S SPECIAL:

2015 Ford KUGA ECOBOOST

LOW KMS, NZ NEW SUV

AWD, Stability Control, Turbo, Parking Sensors, Keyless Start, Tow Bar, 1596cc, Petrol, Auto, 53kms



WAS \$21,995  
NOW \$19,995

2006 Honda Integra Type S

DOHC VTEC, Spoiler, Driving Lights, Alloy Wheels, Coupe, Tow Bar, 1990cc, Petrol, Auto, 99kms



\$11,995

2014 Mitsubishi LANCER LS

NZ NEW, LOW KM's

Cruise Control, MIVEC, Stability Control, Tow bar, Parking Sensors, 1998cc, Petrol, CVT, 83kms



\$13,995

2004 Subaru IMPREZA

5 Spd AWD, One owner

Boxer Engine, Roof Rack, Dual Airbags, Hi/Low Range, Tow Bar, 1994cc, Petrol, Manual, 243kms



\$7,995

2022 MG Zs T ESSENCE

Late Model, Low Km's

Alloy Wheels, 360 Degree Cameras, Heated Electric Leather Seats, Tow Bar, Blind Spot Monitoring, Turbo, 1298cc, Petrol, Auto, 14kms



\$29,995

2012 Mazda Demio

HANDY HATCH!

2WD, Tinted Windows, ABS Braking, Spoiler, 1340cc, Petrol, CVT, 123kms



\$10,995

2015 HYUNDAI TUCSON GDI

FAMILY SIZE, 2WD, Parking Sensors, Descent Mode, Tinted Windows, Daytime Running Lights, 1999cc. Petrol, 6Spd Auto, 193kms



\$14,995

2011 Toyota HILUX DC UTE

TIDY 5 SPD, T/DSL

2WD, Nudge Bar, Tonneau Cover, Alloy Wheels, Tow Bar, ABS Braking, Reversing Camera, 2982cc, Diesel, Manual, 255kms



\$18,995

VEHICLES ARRIVING DAILY - SEE ONSITE SPECIALS

VISIT MERITCARS.CO.NZ



LOCALLY OWNED & OPERATED

Ph 06 281 1925 • Chris Elliot 027 471 5972

Ph 06 757 3585 • Jamie Henry 021 556 223